

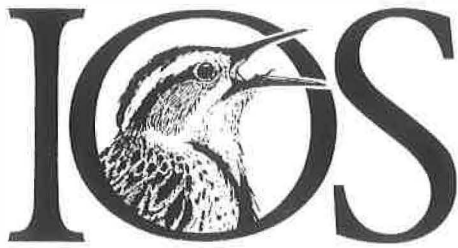
Meadowlark

A JOURNAL OF ILLINOIS BIRDS

Volume 6, Number 3

1997





Illinois Ornithological Society

Publisher

Illinois Ornithological Society
Robert Montgomery, President
Sheryl De Vore, Chief Editor
Renee Baade, Vice-President
Michael Hogg, Treasurer

Board of Directors

Renee Baade
Steve Bailey
Mary Hennen
Michael Hogg
David B. Johnson
Robert Montgomery
Joe Suchecki
Eric Walters
Geoff Williamson

Recording Secretary

Denis Bohm

Associate Editors

David B. Johnson
Peter Lowther
Christine Williamson

Art Editor

Denis Kania

Staff Photographers

Joe B. Milosevich, Dennis Oehmke

Staff Illustrators

David Athans, Brian K. Willis

Pre-Press Production

Kathy Ade

Printing

CityWide Printing
DesPlaines, Illinois

Membership Secretary

Joan Palinscar

Editorial Advisory Board

Laurence C. Binford
Dale Birkenholz
H. David Bohlen
Kenneth J. Brock, Victoria Byre
Robert T. Chapel
Mary Hennen, Scott Hickman
L. Barrie Hunt
Vernon M. Kleen
Scott K. Robinson
W. Douglas Robinson
Robert Szafoni, David Willard

From the Editor

● *of volunteers and Web sites*

While glancing at the title Page of *Meadowlark*, something occurred to me that many of you may not realize. The average amount of time a volunteer stays with an organization is less than one year. But when I look at the title page every quarter to prepare for the next issue, most of the same names are on that page. What does that mean? It means the average time IOS volunteers stay with us is at least five years. That's a major statement about our organization.

Consider that David Athans, Brian Willis, and Denis Kania have been volunteering their time since our first issue to prepare illustrations for us, and that Joe Milosevich has kept sending us his great photos, and that Dave Johnson has kept writing stories and doing the Christmas Bird Count for six years! I could go on, but you get the point.

The only other organization I have volunteered for as long as the Illinois Ornithological Society is Ryerson Woods. This organization also keeps its volunteers much longer than the average. I've been there 10 years.

So what are both of these groups doing right? I think it's a combination of being committed to worthwhile goals, carrying out those goals, and constantly evaluating the organization to make sure it knows what it is and what it wants to be — and what its members want. That and repeating again and again how much the volunteers are appreciated. So thank you, again, volunteers, for all your work on *Meadowlark* and IOS.

A relatively new volunteer, Mary Hennen, has secured permission for IOS to have a Web Site connected to the prestigious Chicago Academy of Sciences Home Page. She'll be the IOS WebMistress, and Denis Bohm and I have volunteered to assist her, providing copy, photos, and drawings. By the time you read this, IOS will probably be on line, and much of that will be thanks to Mary.

Please know that we will not be printing any articles from *Meadowlark* — those belong to you, our paying members. What we hope the Web Site will do is gain more members for IOS and give our members a timely way to find out more about annual meetings, field trips, and other important Illinois birding information.

You'll find the IOS link on the Chicago Academy of Sciences home page at: <http://www.chias.org/>

See you on line.

MEADOWLARK

A Journal of Illinois Birds

Volume 6, Number 3 - 1997

ISSN 1065-2043

President's Message

Did you know that you and I are members of a growth industry? Based upon recent surveys and other information I have been collecting, the hobby of bird-watching is increasing rapidly. *Forbes* magazine published a survey that reported Americans prefer bird-watching to golf! Other surveys have found that the popularity of birding has increased 155% in 10 years — faster than any other outdoor activities. Today some 24.7 million American are engaged in birding.

Birding and other wildlife-related recreation contributes to the economic well-being of the country. Birders spend \$5.2 billion on goods and services per year. Much of this information comes from the 1991 U.S. Fish and Wildlife Service's National Survey of Fish, Hunting and Wildlife-Related Recreation. This survey, conducted every 5 years, found that revenue generated from hunting, fishing, birding, and other wildlife-related recreation amounts to \$67.9 billion or about 1.3 percent of the nation's gross domestic product. In Illinois, watchable wildlife recreation contributes \$1.1 billion and generates some 14,000 full or part-time jobs.

Your participation in wildlife-related activities make an important contribution to the local, state, and nation's economy. We need to get this message out to the businesses we support and in turn build a broader support for conserving, protecting, and managing the habitat needed for the birds and the other wildlife we enjoy.

We can only do this if we work together. The Board and I are looking for your ideas and energy to accomplish this. Will you help us? Let me or another Board member know now, so we can begin this important work.

Until next time.

Bob Montgomery

Articles

- First Band-tailed Pigeon for Illinois**
and its Status in Eastern North America 82
— H. David Bohlen
- Boreal Owl in Rockford:**
First State Record Since 1914 86
— Roy Morris
- The Illinois 1996 Christmas Bird Count** 87
— David B. Johnson and Alan F. Stokie

Departments

- Bird Finding Guide** 105
Eagle Watching at Lake Chautauqua
— Thomas V. Lerczak
- Seasonal Highlights/Winter Season 1996/1997** 107
- Field Notes/Winter Season 1996/1997** 111
— Robert Danley

About Our Cover:

The Snowy Owl staged an invasion in Illinois the winter season of 1996/1997. See details in Christmas Bird Count and Field Notes this issue. Drawing by Walter Marcisz.

Copyright© by the Illinois Ornithological Society. No part of this journal may be reproduced without the written permission of IOS and the chief editor, except brief passages of a paragraph or less in which attribution is made to the journal and author.

First Band-tailed Pigeon and its Status in Eastern North America

By H. David Bohlen

While conducting the Springfield Christmas Bird Count on 22 December 1996, Dennis Oehmke and I stopped to view a flock of Cedar Waxwings. We were along the west side of Lake Springfield at East Hazel Dell Lane. I looked into a deciduous tree above the waxwings and saw a large dove or pigeon with a distinct white collar on the nape. Thinking it might be a Eurasian Collared Dove (*Streptopelia decaocto*) I mentally noted other field marks. The pigeon was fairly high in the tree and at first the underparts looked dove-colored. Then the bird turned its head, giving me a profile. It was immediately obvious that this was not a Eurasian Collared Dove for I could see a red orbital ring and a bright yellow bill with a black tip. There was no doubt in my mind that the bird was a Band-tailed Pigeon (*Columba fasciata*).

We carefully slunk out of the truck, I with my scope, and Oehmke with his camera. For the next hour we viewed the Band-tailed Pigeon. Oehmke took numerous photographs. The bird was high enough and the light was so poor that the real colors, especially the purples were not coming through. It was not until the following day that I definitely saw the purple color. The pigeon sat for long periods making it easy to scope.

The bird showed purplish on its head, throat, and breast, becoming lighter ventrally. Below the nape's white crescent was an interesting

ruff of feathers forming a patch, which was metallic green-gray. The wing coverts were darker gray and the primaries charcoal. The lower back and rump were bluish-gray and the undertail coverts were light buff. The tail was mauve with a dark smudge, then a broad terminal band of gray-buff. The tarsi were bright yellow with black nails. At first, we thought the iris was brown, but in better light, it was an orangish color. Also the "eyelids" were light blue above and below the eye. That first day, I made a sketch in the field and wrote a description which I later revised due to much better views.

It was soon established that the Band-tailed Pigeon was attending a feeder in the yard of house #124 on Hazel Dell at LaRue Scott's. Mr. Scott and his neighbors graciously allowed observers to view the bird. Oehmke sat in a blind near the feeder for three hours one cold morning and obtained good photographs.

Birders easily viewed the pigeon perching in the deciduous trees near the house. At times it hid high up in coniferous trees or oaks retaining leaves. Once, an observer saw it eat dark berries off privet (*Ligustrum* sp.) Occasionally it flew giving the characteristic loud wing clapping. I never heard it call.

At least two different Cooper's Hawks frequently visited the area. This species preys on pigeon-sized birds, but whether this particular pi-

geon became prey or just moved is unknown. I saw the Band-tailed Pigeon 11 different days, and for the last time on 23 January 1997. This bird constitutes the first record for Illinois.

Sibley and Monroe give the range of the Band-tailed Pigeon as western North and Middle America from southwest British Columbia south through the mountains of Washington, Oregon, California, and extreme western Nevada to Baja California and from southern Nevada, Arizona, central Utah, north central Colorado, New Mexico, and western Texas south through the mountains of Mexico, Guatemala, El Salvador, and the Honduras to north central Nicaragua. This is quite an extensive range, however, another very similar form continues even farther, from Costa Rica to northwestern Argentina (White-necked Pigeon - *C. albilinea*). The 6th edition of the A.O.U. Checklist (1983) adds that the Band-tailed Pigeon winters at lower elevations than where it spends time during the breeding season. Also, the species is casual in Alaska, Alberta, Saskatchewan, Idaho, Montana, and North Dakota south to Wyoming, Kansas, Oklahoma, and Texas. The many reports from eastern North America may pertain largely or entirely to individuals escaped from captivity.

Most football fans know the term "go long," and some birds ap-

parently do just that. Biogeographers refer to this phenomenon as long-distance dispersal. Root (1988) states that "in winter, Band-tailed Pigeons in the northern and eastern reaches of the breeding range migrate into the southwestern areas of the summer range." Where migration occurs there is always a certain small percentage of the population that goes off course or migrates the wrong way. Band-tailed Pigeons have also long been known to be nomadic as described in Bent (1932). "This was one of the wandering, restless flocks which travel about during the winter, moving from one place to another as food or fancy leads them." Several of the western regional editors of *American Birds* have noted movements out of the mountains. For example, in southern California, "As is apparently normal, a few Band-tailed Pigeons moved out of the mountains into the lowlands . . ." (McCaskie 1988). These pigeons are very strong, fast fliers able to travel long distances in a short time. This fall and winter (1996-97) many birds came out of the mountains of western North America, including Clark's

Nutcracker (see seasonal highlights in this issue), Pinyon Jay, and Pygmy Nuthatch. In midsummer, Red Crossbills invaded the Great Plains and farther east. Some of these wanderings could be induced by drought conditions in the western mountains.

With at least 49 Band-tailed Pigeon records for the states (eastern North America — see Table 1) not considered in the range or in the casual range by the A.O.U., I suggest that most if not all are of wild origin and are legitimate vagrants. The first eastern record occurred in 1930; the species has also been recorded in the

east almost annually since the late 1960s. These include 20 for winter, 15 for fall, 8 for summer, and 6 for spring. Some observers believe these pigeons are tame (escapees) since they sit for long periods in one place. However, this is normal behavior, and I have noted this habit in the pigeon's usual range.

Apparently Band-tailed Pigeons are rare to non-existent in captivity. Paxton et. al. (1981) stated they knew of no captive population and Duncan (1991) thought the possibility inconsequentially small that these records would pertain to escaped captives.



*Band-tailed Pigeon,
First State Record,
Springfield, Sangamon
Co. 28 Dec. 1996.
Photos by Dennis
Oehmke.*

Table 1. Total Records for Band-tailed Pigeons for Eastern North America

<i>New Brunswick (1)</i>	Fredericton, Feb.1-March 17,1981 (Vickery 1981)
<i>Quebec (1)</i>	St. Andre Avellin, Nov. & Dec.,1996 (Rare Bird Alert Quebec)
<i>Nova Scotia (3)</i>	Seal Island, Sept.23-Oct.19,1974 (Tufts 1986) Colchester County, Dec.1,1981 (Tufts 1986) Yarmouth County, Dec.12-Jan.14, 1995-96 (McLaren 1996)
<i>Ontario (7)</i>	Rondeau Park, Sept.,1930 (James et al 1976) Port Hope, Oct.8,1970 (Goodwin and Rosche 1971) Pickering, Oct.,1973 (James et al 1976) Dorion, Oct. 12-27,1978 (Goodwin). ~The observer was A. Wormington, and there is a photo documentation. Wabigoon, Oct.26-Nov.5,1988 (Weir 1989) Dillon, Sept.16-17,1994 (Ridout 1995) Kenora, April 25,1995 (Ontario Birds 14 #2)
<i>Minnesota (5)</i>	Morris, July,1969 (Green & Jansen 1975) Sand Dunes St. For., June 12,1971 (Green & Jansen 1975) Stearns County, June 23,1975 (T. Hertzal, pers. com.) Hawk Ridge, Sept.18,1982 (Tessen 1983) Itasca County, Sept.1996 (T. Hertzal, pers. com.)
<i>Iowa (1)</i>	Webster County, summer to late Sept.,1970 (Dinsmore et al 1984)
<i>Missouri (2)</i>	Marshall, late Nov.-Feb.20,1983-84 (Robbins and Easterla 1992) Kansas City, March 29-April 20,1985 (Robbins and Easterla 1992)
<i>Louisiana (5)</i>	near Napoleonville, Jan.21,1954 (Lowery 1954) Baton Rouge, May 7,1964 (D. Dittman, pers. com.) near Lake Pontchartrain, Dec.16,1969 (James 1970) Pilottown, Dec.5, 1981 (Ortego 1982) Many, Dec.21- Feb.21,1981-82 (Ortego 1982)
<i>Michigan (1)</i>	Niles, Dec.24-Jan.22,1967-68 (Payne 1983)
<i>Indiana (1)</i>	Beverly Shores, Jan.10-31,1981 (Mumford and Keller 1984)
<i>Illinois (1)</i>	Springfield, Dec.22-Jan.23,1996-97
<i>Kentucky (1)</i>	Eddyville, Nov.30-Dec.1,1973 (Monroe 1994)
<i>Tennessee (1)</i>	Nashville, April 9,1974 (Imhof 1974)
<i>Mississippi (1)</i>	Petit Bois Island, Dec.2,1978 (Hamilton 1979)
<i>Alabama (1)</i>	Dauphin Island, Oct.23,1971 (Purrington 1972)
<i>Maine (3)</i>	Southport Island, April 25-May 2,1980 (Vickery 1980) Monhegan Island, Sept.19,1990 (Duncan 1991) Monhegan, Sept.25,1994 (Ellison and Martin 1995)
<i>New Hampshire (2)</i>	Keene, Jan.3-15,1972 (Finch 1972) Conway, March 6-24,1991 (Perkins 1991)
<i>Massachusetts (2)</i>	Brookline, May 29-June 4,1995 (Petersen 1995) Nantucket Island, June 22-25,1996 (Petersen 1996)
<i>Connecticut (2)</i>	East Haven, Nov.7,1982 (Zeranski and Baptist 1990) Portland, Dec.-March, 1984-85 (Zeranski and Baptist 1990)
<i>Pennsylvania (1)</i>	Presque Isle State Park, Dec.11,1991 (Hall 1992)
<i>New Jersey (1)</i>	Rattlesnake Mt., Sept.17,1980 (Paxton et. al. 1981)
<i>North Carolina (2)</i>	Haywood County, June 10,1980 (Evans 1980) Charlotte, Feb.-March,1994 (Davis 1994)
<i>South Carolina (1)</i>	Georgetown, Aug.16,1991 (Pulliam 1996)
<i>Florida (3)</i>	near Bonifay, Dec.18,1967 (Robertson and Woolfenden 1992) Two, Sarasota, Dec.17-30,1967 (Stevenson 1968) Sugarloaf Key, Sept.25-27,1973 (Edscorn 1974)

* A few of these records have yet to be accepted by records committees.

Acknowledgments

Thanks to Beckie Dyer for help in getting records and typing many drafts, as well as several persons who provided records over the Internet.

Literature Cited

American Ornithologists' Union. 1983. *Check-list of North American birds*. 6th ed. Amer. Ornith. Union. Washington, D.C. 877 pp.

Bent, A. C. 1932. *Life histories of North American gallinaceous birds*. United States National Museum Bulletin 162. 490 pp.

Davis, R. 1994. Southern Atlantic Coast Region. *Field notes* 48(3):288.

Dinsmore, J. J., T. H. Kent, D. Koenig, P. C. Peterson and D. M. Roosa. 1984. *Iowa birds*. Iowa State Univ. Press, Ames. 356 pp.

Duncan, C. 1991. New England Region. *American birds* 45(1):77.

Edscorn, J. 1974. Florida Region. *American birds* 28(1):43.

Ellison, W. and N. Martin. 1995. New England Region. *Field notes* 49(1):23

Evans, M. 1980. First North Carolina record of a Band-tailed Pigeon. *Chat* 44:106-107.

Finch, D. 1972. Northeastern Maritime Region. *American birds* 26(3):579.

Goodwin, C. 1979. Ontario Region. *American birds* 33(2):173.

Goodwin, C. and R. Rosehe. 1971. Ontario-Western New York Region. *American birds* 25(1): 52.

Green, J. C. and R. B. Janssen. 1975. *Minnesota birds*. Univ. of Minnesota Press, Minneapolis. 217 pp.

Hall, G. 1992. Appalachian Region. *American birds* 46(2):264.

Hamilton, R. 1979. Central Southern Region. *American birds* 33(3):289.

Imhof, T. 1974. Central Southern Region. *American birds* 28(4):812.

James, F. 1970. Central Southern Region. *Audubon field notes* 24(3):513.

James, R. D., P. L. McLaren and J. C. Barlow. 1976. *Annotated check-list of the birds of Ontario*. Royal Ontario Museum. Toronto. 75 pp.

Lowery, G. Jr. 1954. Central Southern Region. *Audubon field notes* 8 (3):256

McCaskie, G. 1988. Southern Pacific Coast Region. *American birds* 42 (1):136.

McLaren, I. 1996. Atlantic Provinces Region. *Field notes* 50 (2):142.

Monroe, B. Jr. 1994. *The birds of Kentucky*. Indiana University Press. 145pp.

Mumford, R. E. And C. E. Keller. 1984. *Birds of Indiana*. Indiana Univ. Press. Bloomington. 400 pp.

Ontario Bird Records Committee. 1996. Ontario Bird Records Committee Report for 1995. *Ontario birds* 14 (2). page # ?

Ortego, B. 1982. Central Southern Region. *American birds* 36 (3):303.

Payne, R. B. 1983. *A distributional check-list of the birds of Michigan*. Misc. Publ. 164. Univ. of

Michigan Museum of Zoology, Ann Arbor. 71 pp.

Paxton, R., W. Boyle Jr. and D. Cutler. 1981. Hudson-Delaware Region. *American birds* 35(2):164.

Perkins, S. 1991. New England Region. *American birds* 45(3):417-418.

Petersen, W. 1995. New England Region. *Field notes* 49(5):909-910.

Petersen, W. 1996. New England Region. *Field notes* 50(5):929.

Pulliam, B. 1996. Band-tailed Pigeon observed in Georgetown, South Carolina. *The Chat* 60 (2): 60-62.

Purrington, R. 1972. Central Southern Region. *American birds* 26(1):76.

Ridout, R. 1995. Ontario Region. *Field notes* 49(1):43.

Robbins, M. B. and D. A. Easterla. 1992. *Birds of Missouri*. University of Missouri Press. Columbia and London. 399 pp.

Robertson W., Jr. and G. Woolfenden. 1992. *Florida bird species: An annotated list*. Florida Ornithological Society. 260 pp.

Root, T. 1988. *Atlas of wintering North American birds*. The University of Chicago Press. 312 pp.

Sibley, C. G. and B. L. Monroe, Jr. 1990. *Distribution and taxonomy of birds of the world*. Yale University Press. 111 pp.

Stevenson, H. 1968. Florida Region. *Audubon field notes* 22(3):433.

Tessen, D. 1983. Western Great Lakes Region. *American birds* 37(2):183

Tufts, R. W. 1986. *Birds of Nova Scotia*. 3ed. Nimus Publishing and the Nova Scotia Museum. 478pp.

Vickery, P. 1980. Northeastern Maritime Region. *American birds* 34(5):756.

Vickery, P. 1981. Northeastern Maritime Region. *American birds* 35(3):280.

Weir, R. 1989. Ontario Region. *American birds* 43(1):97.

Zeranski J. and T. Baptist. 1990. *Connecticut birds*. University Press of New England. Hanover, New Hampshire. 335 pp.

— H. David Bohlen
Assistant Curator of Zoology
Illinois State Museum
Research & Collections Center
1011 East Ash Street
Springfield, Illinois 62703
email:bohlen@museum.state.il.us

Boreal Owl in Rockford: First State Record Since 1914

By Roy Morris

On Sunday morning, 9 February 1997, fellow birder, Marian Doyle, called me with the incredible news that a Boreal Owl (*Asio funer-eus*) was in her Rockford, Illinois backyard. She said the bird had hit a window of her home and was flying into some evergreens in her yard's back corner. She and a friend, Dolores Jensen, were sure it was a Boreal Owl.

Doyle, an experienced birder, calmly described this astounding event — a Boreal Owl as a yard bird in Illinois. I, on the other hand, was dumbfounded. Only four days earlier, four of us local listers had driven 340 miles to Minneapolis to see a Boreal Owl that was wintering at the Springbrook Nature Center. It was a life bird for three of us and a lower 48 bird for the fourth. My preliminary research before taking the Minneapolis trip prepared me well for confirming Doyle's identification.

I reached her house in a record 10 minutes, and met her in the backyard of this older residential area in the heart of Rockford. The owl was perched in a scraggly upright yew about 5 feet above the ground and was clearly visible from the north. We restricted our approach to about 25 feet to avoid alarming the bird. It



Boreal Owl, First State Record in 89 years. Belvidere, IL, Rockford Co. 9 Feb. 1997. Photo by Marjory Rand.

did not appear to be injured and remained on this perch facing us, allowing extended study with binoculars and a spotting scope.

The 10- to 11-inch long stubby owl had a broad, rounded head and no ear tufts. The grayish-brown head had numerous uniformly distributed small white spots on the forehead. Its face was outlined distinctly with a black rim and black eyebrow enclosing prominent white cheeks. The bill was uniformly ivory and the eyes were yellow. Its whitish breast had numerous broad chocolate brown streaks. The back was brown black. The underside of a broad, stubby tail was mottled brown and whitish with no banding.

It was an adult Boreal Owl!

My immediate concern was to get positive documentation. Calls were made to several local birders with experience in photographing birds, and photos were obtained. Doyle was concerned that the owl had been injured or stressed and wanted to minimize disturbance, but our local telephone tree hot line was used to notify other birders. Over 20 people observed the owl on Sunday. It was gone the following morning never to be found again.

Only five documented records exist for Boreal Owl in Illinois, the most recent in 1914 in Chicago (Bohlen 1989). Surprisingly, the first documented Illinois Boreal Owl was in 1884 when an owl hit a store window in Rockford.

Literature Cited

Bohlen. 1989. The birds of Illinois. Indiana University Press. Bloomington, IN.

— Roy Morris
5590 Thunderidge Drive
Rockford, Illinois 61107

The Illinois 1996 Christmas Bird Count

By David B. Johnson and Alan F. Stokie

We dedicate this report to Pete Petersen, who died this summer after a long bout with cancer. By the end of the 1996 Christmas Bird Count season Pete had completed 242 CBCs and compiled 179! His untiring CBC efforts have long been appreciated by Illinois birders. We will miss him greatly and will long remember him for his dedication and commitment to birding in our state as well as his home state of Iowa.



Three Turkey Vultures were recorded on the Fermi-Lab Christmas Bird Count. Drawing by Denis Kania.

Illinois birders marching through their appointed territories within 59 count circles encountered many avian surprises such as high numbers of unusual geese, an irruption of Snowy Owls, and several new species records during the 1996 Christmas Bird Count Season.

As in the 1995 CBC season, early cold fronts pushed many water and land birds out of the state. Temperatures on count days were normal and snow cover was minimal. Most of the count circles had frozen water. The mean low temperature was about 30 degrees F; the mean high was 39 degrees F.

The hoped-for dispersal of montane species from the west into Illinois did occur but was only detected by 59 Red Crossbills in 2 count circles and an ultra rare vagrant and first state record for **Band-tailed Pigeon**.

Of course, there were additional sprinklings of rarities, unusual high and low counts as observers hiked, drove, and canoed over territories in search of more data on early winter bird distribution in Illinois.

Results included 149 species plus 3 exotics: Chukar (in Iowa), Monk Parakeet, and Ringed Turtle-Dove or Collared-Dove. No count recorded 100 or more species; only

two counts recorded 90 or more. Union County tallied the highest, 93, while Horseshoe Lake came in second with 92 species. Only 6 counts recorded 80 or more species. Springfield's 84 species was an impressive total for central Illinois. Waukegan recorded the most species in northern Illinois with 76. Rend Lake had the highest number of individuals: 1,101,770. Fermilab-Batavia for the third consecutive year fielded the most observers in the state, 74.

CBC Firsts and Rarities

We welcome a new count from Baldwin Lake—Kaskaskia River Valley in southern Illinois.

Four new Illinois CBC firsts were recorded. The most remarkable find was Springfield's **Band-tailed Pigeon** recorded on count day near Lake Springfield's western shore. This was not only a CBC first, but a state first as well. A close second goes to the **Brewer's Sparrow** at Chicago Lakefront, a state-first wintering and CBC record. Also new to the CBC species list were two **Clay-colored Sparrows** at Chicago Urban; these birds also successfully wintered.

Certainly out of season and also most remarkable was the fairly well described **Neotropic Cormorant** at Horseshoe Lake. A Townsend's Solitaire was noted at Kishwaukee (for the second year in a row!) and a Varied Thrush was at Waukegan.

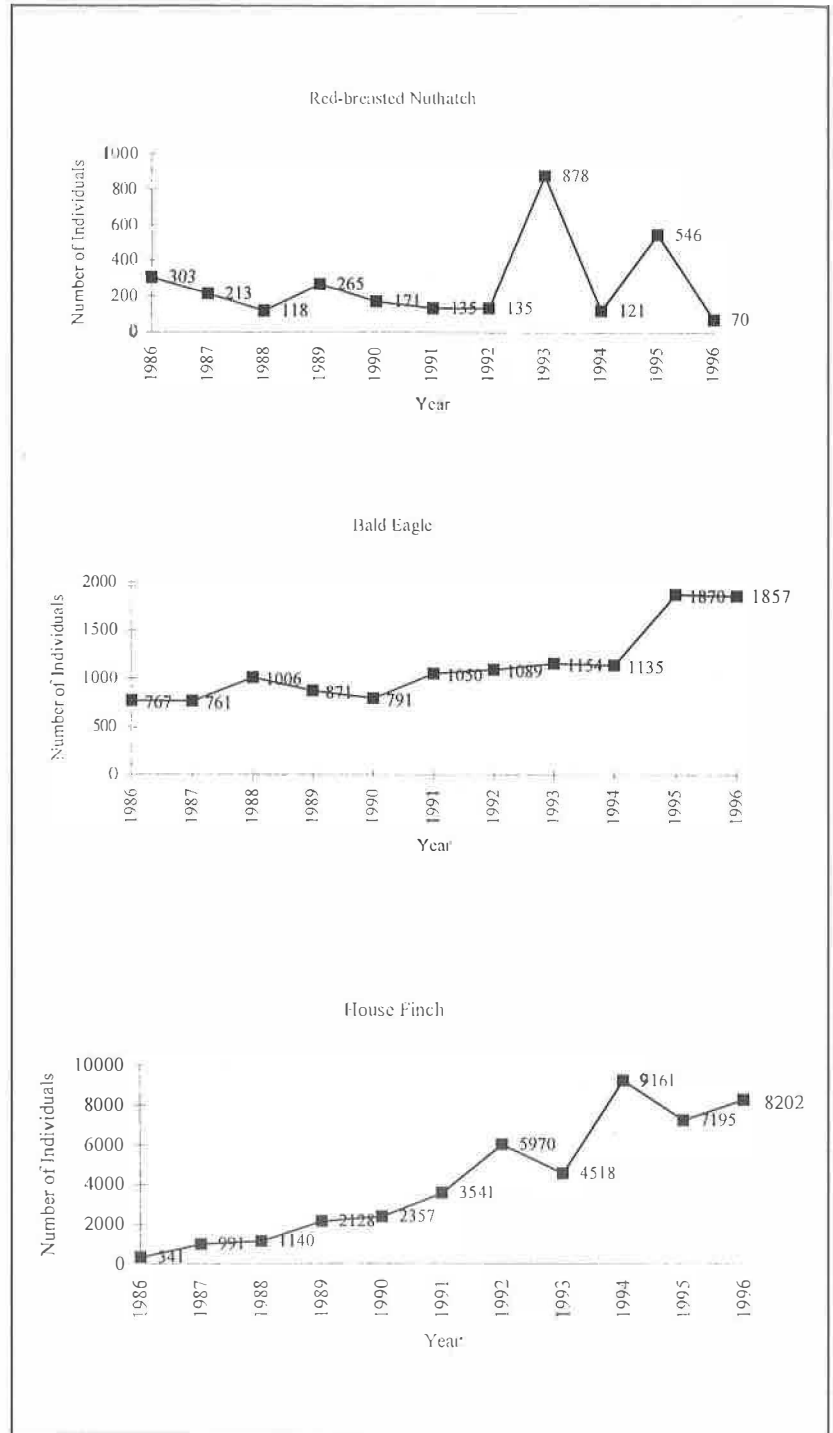
Evanston and Fermilab-Batavia had their first Lesser Black-backed Gulls. Calumet City-Sand Ridge and Chillicothe recorded the only Great Black-backed Gulls. Peoria and Muscatine, Iowa had the only Ice-land Gulls.

Water Birds

Waterfowl numbers were low due to the freeze out. One Common Loon was reported at Rend Lake.

Pied-billed Grebe numbers seemed above average, 171 in 16 count circles, including impressive counts of 47 individuals at Crab Orchard NWR and 44 at Springfield. Only 3 Horned Grebes in 3 count circles were recorded. Forty-nine Tundra Swans were recorded in 5 count circles, 5

birds were in southern Illinois. A count week Harlequin Duck was in the surf off Lake Michigan at Evanston. The Mallard X Wood Duck male type hybrid certainly was a bizarre find on the Chicago Urban count. Three American White Pelicans were at Pere Marquette.



Waukegan had 2 Virginia Rails. The only woodcocks were at Schapville and Union County.

Raptors

The 4 well-documented occurrences of Turkey Vultures in northern Illinois were unusual (3 at Fermilab-Batavia and one at Joliet) as were the 26 Turkey Vultures at Middle Fork River Valley in central Illinois. Bald Eagle numbers seem to be leveling at record numbers (see histogram). Four Golden Eagles were recorded in southern Illinois on 3 counts, Crane Lake, Cypress Creek, and Union (2 birds). Ninety-four Rough-legged Hawks were noted in 36 count circles. The only Merlins were singles at Rockford and Meredosia Island and a count-week bird at Kishwaukee.

Barrington had the highest count of 10 Long-eared Owls. Cypress Creek recorded 13 Short-eared Owls and Fermilab Batavia was close behind with 12. Only 3 Northern Saw-whet Owls were recorded, all in central Illinois, Middle Fork River Valley, Forest Glen Preserve, and Western Mercer. See irruptive species below for an account of Snowy Owls.

Passerines

House Finch numbers continue to rise (see histogram). The Eurasian Tree Sparrow movement up the western Illinois river valleys was best noted by Western Mercer's count circle / record of 91 birds. Meredosia Island's 581 was also a remarkable number.

A conspicuous miss this year was the Gray Partridge. Compilers also noted a decline in Ring-necked Pheasant numbers.

Three well-described Marsh Wrens were recorded, singles at Calumet City—Sand Ridge, Rockford, and Middle Fork River Valley. The only House Wrens were at Springfield and Clinton Lake. Two Eastern Phoebes

were recorded, surprisingly both in northern Illinois at Calumet City—Sand Ridge and Fermilab—Batavia. Twenty-three American Pipits were at Horseshoe Lake. Decatur recorded the only Gray Catbird. Single Spotted Towhees were tallied at Barrington, Meredosia Island, and Union County. Two Yellow-headed Blackbirds were noted, one in northern Illinois at Calumet City—Sand Ridge and the other at Rend Lake in southern Illinois. The only accepted Brewer's Blackbird was at Fermilab—Batavia. Immature Indigo Buntings were at Carlyle and Horseshoe Lake CBCs. The only Le Conte's Sparrows were at Cypress Creek and Horseshoe Lake. The only unusual warblers were two well-described Pines at Union and Warbluff Valley.

Irruptive Species

The best irruptive species was the Snowy Owl. Chicago lakefront recorded a near-record 7 individuals (8 is the state record—Calumet City—Sand Ridge, 1981 CBC). Sixteen Snowy Owls were recorded in the state (in 5 count circles). Illini, the only inland count to record this species, had 2 Snowies along a nuclear power plant dike. A remarkable southern Illinois Snowy Owl was recorded during count week at Carlyle Lake.

The expected irruption of Red Crossbills was noted on the Chautauqua NWR with 58 individuals in Mason State Forest. The only other count record of this species was a solitary bird at Rockford and two count-week birds at Meredosia Island. Northern Shrike numbers returned to normal after last year's invasion with 18 individuals (54 in 1995) in 10 count circles. Other winter finches were almost nil. Fifty-seven Pine Siskins were reported in 14 count circles and 7 Common Redpolls were reported in 4 count circles. No Evening Grosbeaks were counted. After two good-number years, the

Red-breasted Nuthatch was recorded at a 10-year low (see histogram).

High Counts

Observers set 10 new all-time state high counts of individuals recorded within a count circle. All-time high state counts included 162 Great Blue Herons at Rend Lake and 244 Mute Swans at Calumet City—Sand Ridge. Burgeoning unusual geese numbers included an all-time high count for 3 species: 600 Greater White-fronted Geese at Cypress Creek, 53,394 Snow Geese at Pere Marquette, and an amazing 16 Ross's Geese at Union County (13 at Horseshoe Lake). The 3 Ross's Geese at Fermilab-Batavia and 1 at Bloomington were first CBC records for northern and central Illinois. The 36 Bald Eagles at Peoria were a new count high as were the 24 at Starved Rock. Middle Fork River Valley's 255,000 American Crows at a Danville roost site defies imagination. Alfred Hitchcock's "The Birds" has reached Illinois! This crow count was measured and re-measured both on count day and several weeks after. Horseshoe Lake recorded a record 312 Carolina Wrens and 1,498 White-throated Sparrows. Although not a record high count, Chicago Urban birders recorded a remarkable 46 White-throated Sparrows in downtown Chicago—singing among the skyscrapers at dawn. One-hundred-eleven Ringed Turtle-Doves was a new record at Joliet. Carlyle Lake recorded an impressive state-high 1,370 American Goldfinches.

Identification Problems

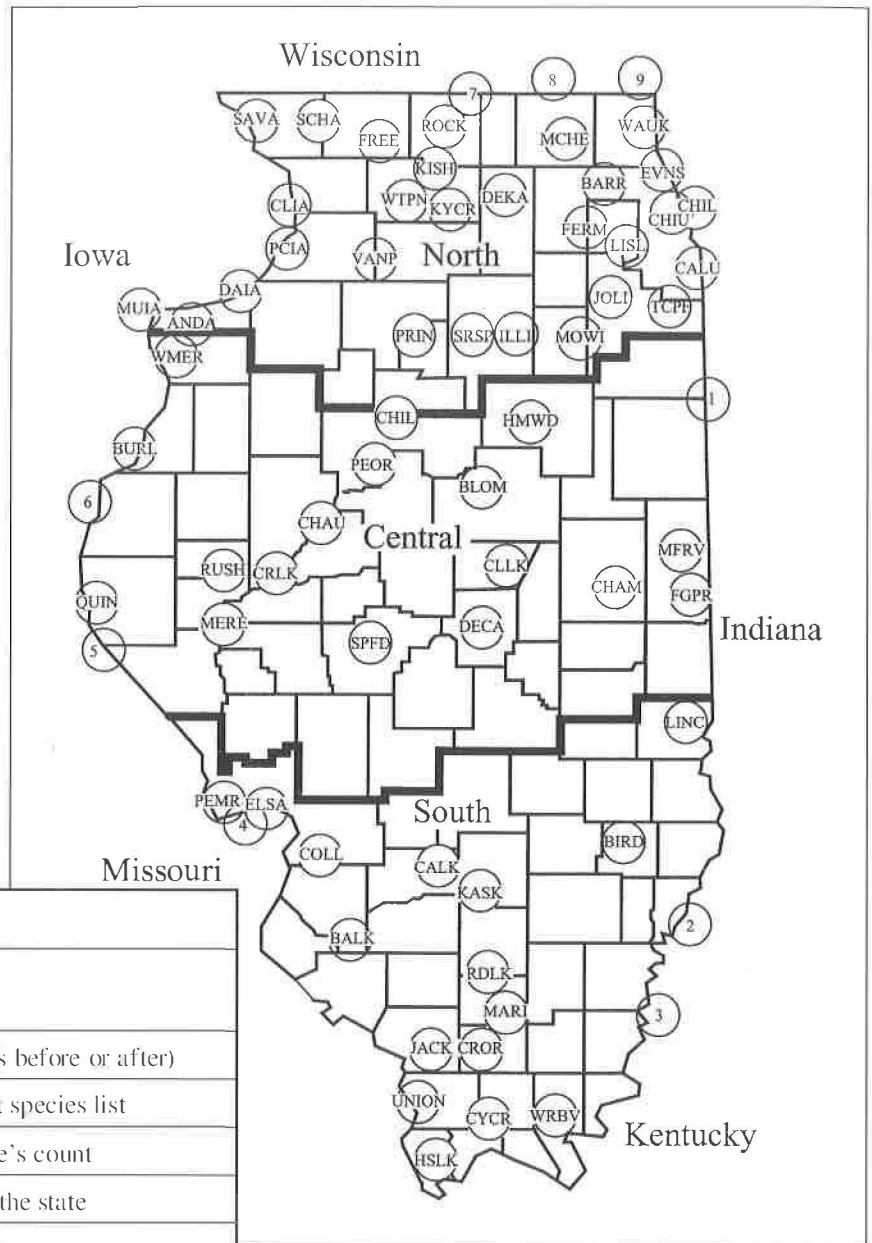
Lincoln's Sparrows and Brewer's Blackbirds continue to present difficult field identification problems on CBCs. These species require meticulous descriptions and photographs to insure proper documentation. Several descriptions submitted this season of Lincoln's Sparrows

were more suggestive of immature Swamp Sparrows, which at a distance resemble Lincoln's Sparrow.

Illinois CBC rarities listed in this report have been reviewed and accepted by the Illinois Ornithological Records Committee. In several instances, rare and out-of-season species were dropped from this report due to lack of convincing evidence.

— David B. Johnson
504 Crown Point Drive
Buffalo Grove, IL 60089

— Alan F. Stoke
174 E. Kathleen Drive
Park Ridge, IL 60068



Key to Tables	
Code	Description—
cw	count week only (3 days before or after)
NC	New to the state's Count species list
nc	new species to that circle's count
HC	all-time High Count for the state
hc	high count for that circle
imm	immature
*	Documented species
ps	Present for sometime
ph	Photographed
m	remarkable number
rr	remarkable record
ud	unconvincing details
vt	videotaped
boldface = species/number/item of note	

Illinois '96 Christmas • Bird Count: Table 1

Count Name	Map I.D.	Date	Time		Temp		Sky	Snow	Water	Wind	Wind Dir	Wind Veloc	Field Obsrv	Feeder	Parties	Party	Hours	Hours	Party	Miles	Miles	Owling	Owling	Compiler	Area	
			Begin	End	Low	High																				Hours
Andalusia-Buffalo	ANDA	29-Dec	0530	1700	19	24	Cloudy	0.00	Prly Froz	S	5	10	6	0	0.00	4	26.00	8.00	18.00	244.00	6.00	238.00	0.00	0.00	Peter C. Petersen	
Barrington	BARR	25-Dec	0700	1630	36	38	Cldg, Foggy, Lght rain	0.00	Prly Froz	S-SW	3	6	27	5	7.00	8-18	72.50	36.00	310.75	23.75	287.00	2.00	1.00	Duane Heaton		
Cadotte City-Sand Ridge	CALC	28-Dec	0700	1630	32	39	Foggy, Cloudy	0.00	Prly Froz	Calm	0	0	42	6	13.50	20	96.00	69.00	310.00	41.00	269.00	0.50	0.50	P. Samuel, J. C., C. Marsh		
Chicago Lakefront	CHI L	25-Dec	0700	1500	5	10	Cloudy	1-2.00	Prly Froz	NW	14	14	11	0	0.00	2-4	16.00	3.00	13.00	24.00	5.00	19.00	0.00	0.00	Joel Greenberg	
Chicago Urban	CHI U	22-Dec	0400	1400	33	43	Prly Clear, Cloudy	0.00	Prly Froz	S	0	12	12	8	8.00	7-9	64.00	54.00	10.00	295.00	45.00	250.00	3.00	1.50	Jeffrey Sanders	
Clinton IA-Savanna Fulton	CL IA	23-Dec	0530	1730	32	37	Cloudy, light rain	0.00	Prly Froz	E,NW	6	15	6	0	0.00	4	36.00	6.00	30.00	424.00	6.00	7.00	3.00	29.00	Peter C. Petersen	
De Kalb	DE KA	22-Dec	0700	1630	31	39	Cloudy	0.00	Prly Froz	SE	5	10	18	0	0.00	6	46.50	30.00	16.50	305.00	46.0	259.00	0.00	0.00	Steve Messenger	
Evansville North Shore	EVNS	28-Dec	0345	1700	35	46	Prly Clgy, Foggy	2.00	Prly Froz	S	3	8	51	26	26.00	22-25	130.00	113.00	17.00	358.50	84.25	274.25	6.25	18.00	David B. Johnson	
Fermi Lab-Bataavia	FERM	21-Dec	0630	1645	22	37	Cloudy	0.00	Prly Froz	S-SW	10	20	74	2	10.00	9-24	155.00	120.50	34.50	581.00	122.00	459.00	5.50	26.00	Denis Kamia	
Freeport	FREE	30-Dec	0715	1630	12	26	Clear, Prly Foggy	2.00	Prly Froz	S	0	2	7	3	6.00	3	23.50	2.50	21.00	302.00	2.00	300.00	3.50	44.50	Keith Blackmore	
Hill State Park	HILL	21-Dec	0500	1700	22	42	Prly Cloudy	0.00	Prly Froz	S	5	20	15	3	4.00	5	39.75	13.00	16.75	340.50	17.50	323.00	3.25	32.00	Jim Hampson	Z
Joliet	JOLI	21-Dec	0700	1700	26	38	Cloudy	0.00	Prly Froz	SW	10	25	11	2	2.00	7	57.00	27.00	30.00	331.00	20.00	311.00	1.00	2.00	Jerry Olson	
Kishwaukee	KISH	28-Dec	0700	1700	34	36	Foggy	2-3.00	Prly Froz	Calm	0	0	33	7	14.00	14-15	94.00	45.75	48.25	625.25	40.25	585.00	4.00	2.75	Brad Grover	D
Lisle Arboretum	LISL	22-Dec	0430	1700	30	40	Cloudy, Foggy, Lght rain	0-2.00	Prly Froz	S-SE	3	10	43	0	0.00	13	123.50	95.50	28.00	365.50	115.50	250.00	6.50	28.00	John Leonard	
McHenry County	MCHE	21-Dec	0700	1700	10	38	Cloudy, Foggy	0.00	Prly Froz	W	10	20	36	4	7.00	17	70.20	32.00	38.20	448.00	37.00	411.00	2.25	24.00	David A. Frey	M
Morris-Wilmington	MOWI	28-Dec	0700	1630	35	41	Foggy	0.00	Prly Froz	Calm	0	0	12	4	8.00	7	66.00	19.00	47.00	405.00	20.00	385.00	0.00	0.00	John Stefan	
Muscatine IA-IL City	MU IA	28-Dec	0500	1700	32	38	Foggy	0.00	Prly Froz	S	5	10	9	6	12.00	4	36.00	8.00	28.00	413.00	8.00	385.00	6.50	42.00	Peter C. Petersen	H
Princeton-Bureau	PRIN	5-Jan	0545	1500	21	24	Cloudy	3.00	Prly Froz	NW	9	24	4	0	0.00	2	13.25	0.50	12.75	184.50	0.50	184.00	1.00	14.00	Steven Shipp	
Princeton-Cordova	PCIA	30-Dec	0556	1600	15	29	Clear, Cloudy	0.00	Prly Froz	E	5	12	9	3	4.00	3	33.00	12.00	21.00	318.00	15.00	303.00	5.50	56.00	Peter C. Petersen	M
Quad Cities	DA IA	22-Dec	0300	1700	33	38	Cloudy	0.00	Prly Open	E	5	15	21	8	16.00	10	68.00	26.00	42.00	538.00	26.00	512.00	10.00	67.00	Peter C. Petersen	
Rockford	ROCK	21-Dec	0700	1630	22	34	Cloudy	0.00	Prly Open	W	5	10	37	1	1.00	12-14	90.25	43.00	47.25	532.00	47.00	485.00	1.00	10.00	Dan Williams	
Savannah Army Depot	SAVA	18-Dec	900	1245	-5	-5	Prly Cloudy	0.00	Prly Frozen	SW	15	15	6	0	0.00	2	7.50	2.00	5.50	60.00	2.00	58.00	0.00	0.00	John Bergstrom	
Schuyler	SCHA	28-Dec	730	1700	32	34	Foggy	6.00	Prly Froz	S-E	0	5	19	0	0.50	2	39.00	4.00	35.00	352.00	7.00	345.00	0.00	0.00	Terrence N. Ingram	
Starved Rock State Park	SRSF	29-Dec	0545	1700	27	35	Cloudy, light snow	0.00	Prly Froz	W	5	10	15	0	0.00	7	56.75	33.50	23.25	474.50	48.50	426.00	1.75	15.00	John McKee	
Thorn Creek-Park Forest	TCPF	29-Dec	0530	1710	28	35	Cloudy	0.00	Prly Froz	SW	0	5	31	11	15.50	13	79.22	49.50	29.72	354.50	51.00	303.50	2.50	9.00	Jim Kelly	
Van Patten	VANP	1-Jan	0600	1700	32	37	Cloudy, fog, light mist	0.00	Prly Froz	S	0	5	4	2	2.00	3	22.50	3.00	14.50	252.00	3.00	249.00	2.00	16.00	Peter C. Petersen	
Waukegan	WAUK	1-Jan	0530	1700	37	42	Foggy light rain, Clgy	0-1.0	Prly Froz	W-SW	9	14	21	51	79.00	13-15	77.75	62.25	15.50	354.00	50.50	303.50	1.50	8.00	Joel Greenberg	
White Plains	WTPN	21-Dec	0800	1700	18	34	Prly Clgy	0.00	Prly Froz	NW	2	10	8	4	8.00	4	27.00	12.00	15.00	252.00	11.00	241.00	0.00	0.00	Jerry McCormick	
Bloomington-Normal	BLOM	28-Dec	0730	1700	36	45	Cloudy, foggy	0.00	Prly Froz	S	5	10	12	0	0.00	6	33.00	27.00	6.00	180.00	30.00	150.00	0.00	0.00	Dale Birkenholz	C
Champaign County	CHAM	21-Dec	0600	1700	16	36	Cloudy, Partly Clear	0.01	Prly Froz	S	15	25	27	5	10.00	12	69.00	50.00	19.00	418.75	53.25	365.50	2.00	27.00	Helen M. Parker	
Chauteauque N.W.R.	CHAU	28-Dec	0648	1630	36	48	Foggy, Prly Clear	0.00	Prly Open	SW	0	5	19	1	0.50	6-8	54.25	26.50	27.75	364.25	28.25	336.00	0.00	0.00	Richard C. Bjorklund	M
Chillicothe	CHIL	21-Dec	0700	1600	28	36	Prly Cloudy	0.00	Prly Froz	S	10	15	19	0	0.00	8	53.00	11.00	42.00	425.00	16.00	409.00	0.00	0.00	Richard Collins	
Clinton Lake	CLIK	20-Dec	0450	1710	8	25	Prly Cloudy	0.00	Prly Froz	NW, S	5	20	9	0	0.00	5	46.50	26.50	20.00	339.00	24.00	315.00	3.00	23.00	Myrna Deaton	Z
Crane Lake-Sangamon	CRLK	21-Dec	0700	1700	24	44	Partly Cloudy	0.00	Prly Froz	SW	15	20	8	0	0.00	5	36.00	15.50	20.50	316.00	20.00	296.00	0.00	0.00	Robert Q. Randall	
Decatur	DECA	21-Dec	0313	1645	21	40	Cloudy	0.00	Prly Froz	S	15	25	14	12	16.00	8	43.50	29.50	14.00	309.00	29.00	280.00	1.50	12.00	Myrna Deaton	H
Forest Glen Preserve	FGPR	28-Dec	0600	1700	38	50	Cloudy, foggy	0.00	Prly Froz	SW	0	5	17	0	0.00	11	61.50	39.25	22.25	222.00	34.00	188.00	2.25	9.00	Marilyn F. Campbell	
Humiston Woods	HMWD	30-Dec	0630	1700	30	38	Foggy, light rain	0.00	Open	SW	0	5	23	8	10.00	5	30.00	20.00	14.00	25.00	10.00	20.00	0.00	0.00	Joe Jobst	B
Meredos Island	MERE	22-Dec	0700	1700	33	57	Cloudy, light rain	0.00	Prly Froz	S	0	10	5	0	0.00	3	25.00	4.50	20.50	228.00	7.00	221.00	0.00	0.00	Tony Ward	
Middle Fork River Valley	MFRV	1-Jan	0100	1700	35	49	Cloudy, foggy	0.00	Prly Froz	SW	0	10	19	3	3.00	10-13	73.50	53.50	20.00	451.00	61.00	390.00	6.00	44.00	Steven D. Bailey	P
Peoria	PEOR	4-Jan	0700	1630	55	63	Cloudy, rain	0.00	Prly Froz	SW	10	20	22	0	0.00	8	71.00	20.00	51.00	496.00	22.00	474.00	0.00	0.00	L. H. Trincen	
Quincy, IL-Marion Co.MO	QUIN	28-Dec	0700	1615	34	42	Foggy	0.00	Prly Froz	S	0	5	13	5	8.50	7	39.50	10.00	29.50	318.50	7.50	311.00	1.00	8.00	Ken Vail	I
Rushville	RUSH	4-Jan	0700	1700	55	62	Cloudy	0.00	Prly Froz	SE	0	15	5	31	39.00	4	11.25	5.25	6.00	34.00	4.00	30.00	0.00	0.00	Harold E. Hodden	
Springfield	SPFD	22-Dec	0500	1700	36	52	Cloudy	0.00	Prly Froz	S	5	10	11	7	14.00	7	53.00	28.50	24.50	271.00	36.00	235.00	2.00	26.00	H. David Bohlen	
Western Moxee	WMER	27-Dec	0530	1700	19	32	Cloudy, light mist	0.00	Prly Froz	S	5	12	9	0	0.00	4	39.00	11.00	28.00	334.00	12.00	322.00	5.00	45.00	Peter C. Petersen	
Baldwin Lake/Kaskaskia	BALK	21-Dec	0442	1815	29	44	Prly clear, Cloudy	0.00	Prly Froz	SSW	15	25	8	2	4.00	4	40.66	21.98	18.68	254.80	11.50	243.30	2.87	24.00	Tim Dever	
Birch Haven Sanctuary-Obney	BIRD	21-Dec	0700	1700	24	27	Prly clear, Cloudy	6.00	Prly Froz	WNW	15	25	18	0	0.00	8	34.00	17.50	36.50	363.00	19.00	344.00	0.00	0.00	Frank E. Stornett	
Carlyle Lake	CALK	22-Dec	0642	1710	39	52	Cloudy	0.00	Prly Froz	S	25	25	6	0	0.00	4	39.00	26.00	13.00	366.00	31.00	335.00	2.00	31.00	Dan Kassebaum	
Collinsville	COLL	21-Dec	0745	1630	29	40	Cloudy	0.00	Prly Froz	S	17	30	9	0	0.00	5	43.25	21.00	22.25	364.50	20.50	344.00	0.00	0.00	L. B. Henderson	S
Crab Orchard N.W.R.	CROR	21-Dec	0635	1708	22	43	Prly Clear	0-2.00	Prly Froz	S	10	15	17	0	0.00	7	80.50	23.50	37.00	332.00	19.00	313.00	1.00	10.00	Tracy R. Evans	
Cypress Creek	CYCR	20-Dec	0635	1708	40	26	Clear	3.00	Prly Froz	SE	7	7	20	2	4.00	8	76.00	30.30	45.70	472.00	25.00	447.00	2.00	10.00	Judy K. DeNeal	C
Elmhurst	ELSA	28-Dec	73	0	1500	?	Cloudy, foggy	0.00	Prly Froz	Calm	0	0	6	0	0.00	2	13.00	0.00	13.00	27.75	0.00	27.75	0.00	0.00	Taylor A. DeLaney	
Horseshoe Lake	HSLK	3-Jan	0500	1800	58	65	Cloudy	0.00	Open	SE	5	15	26	2	2.00	14	111.00	69.50	41.50	560.50	67.50	493.00	6.50	8.00	Vernon Kleen	E
Jackson County	JACK	1-Jan	0630	1700																						

Illinois '96 Christmas • Northern Counts

Species	WAUK	EVNS	CHI U	CHI L	CALU	MCHE	BARR	FERM	LISL	TCPF	JOLI	MOWI	DE KA	ILLI	ROCK	KISH	SRSP	FREE	TOTAL
Pied-billed Grebe					2						1	8					1		
Horned Grebe												1							
Double-crested Cormorant				1	6						1	16		1			1		
Great Blue Heron	1	7	5		2	5	5 hc	9	6	2	5	6		20	2	3	21		
Black-crowned Night-Heron		1	8		9*														18
Tundra Swan	38								6*										
Mute Swan	26	1		1	244 HC		4	2	4	2			1hc						
Greater White-fronted Goose								1											
Snow Goose	1						1	14			4	1	5	5	2	1			
Ross's Goose								3* nc											
Canada Goose	11603	4828	1409 hc	1090	1386	7356	20869 hc	45591 hc	6123	827	7076	15433	994	13198	10083	6424 hc	2199	2	
Wood Duck	3		7		5			1		6	1		1hc	8	5	1		1	
Green-winged Teal		2	1						12		3		1hc						
American Black Duck	41	25	27		26	1	7	44	27	1	8	126		239	24	4	1		
Mallard	1524	2032	2031	48	2150	388	909	3492	1782	282	1132	51247	480	12180	2145	1267	290	106	
Mallard X Black Hybrid		1																	1
Mallard X Wood Duck			1																1
Northern Pintail			1		6						4			2					
Northern Shoveler		1	1		1			1			1								
Gadwall	18		11		4			1	32		42	92		6	2				
American Wigeon	4	3	6							1		3		5	1				
Canvasback	2										3	5		1					
Redhead	8				2							2							
Ring-necked Duck		1	8		1						3				1				
Greater Scaup	14	5		2	12														
Lesser Scaup	19		17	1	201	1	1		1		33	40		7	2				
scaup sp.					659														
Harlequin Duck		ew																	1-cw
Oldsquaw	32	5																	
Surf Scoter		1																	
Common Goldeneye	203	696	102	118	208	1	50	66			64	316		187	3	6	58		
Bufflehead	99	6	1	6	7						7	1							
Hooded Merganser	23		3		9			3 hc			2	55		25		2			
Common Merganser	150	51	1	12	22	3	ew		6		35	1115		4029	1	2	500		
Red-breasted Merganser	58	109	1	24	27				5			2		1					
Ruddy Duck		1						1			2	1							
duck sp.		6			12										4				
Turkey Vulture								3* nc			1*								
Bald Eagle	2				1			1	2			ew-1		5	4	4 hc	24 hc		
adults	1				1			1	1					2	2	1	14		
immatures	1								1			ew		3	2	3	10		
eagle sp.															1				
Northern Harrier	2					4	1	18 hc	1	6	2	2		29	1	1	5	2	
Sharp-shinned Hawk	4	1			1	3	1	2	4	2	1	2		2	2	ew	3	1	
Cooper's Hawk	4	7	2	ew	1	4	7 hc	4	5	2	3		2	2	4	5	2	1	
Northern Goshawk							1*			1*						1*			
accipiter sp.									1						2	1			
Red-shouldered Hawk		1																	
Red-tailed Hawk	42	42	7	2	27	50	62	95	56	48	30	39	24	19	99	48	41	48	
Rough-legged Hawk	3	5				2				5	1	2	2	5	4	ew	3	2	
American Kestrel	13	22	3		22	7	15	34	20	26	9	7	18	12	22	13	30	14	
Merlin															1*	ew*			
Peregrine Falcon	1		1		2*														
large falcon													1						1
hawk sp.					1		1	1	1										
Ring-necked Pheasant	2				11	9	1	22	5	22	3	12	16	16	35	23	14	20	
Wild Turkey														9	31	7	2	8	

Illinois '96 Christmas • Northern Counts

Species	WAUK	EVNS	CHI U	CHI L	CALU	MCHE	BARR	FERM	LISL	TCPF	JOLI	MOWI	DE KA	ILLI	ROCK	KISH	SRSP	FREE	TOTAL
Northern Bobwhite																1	3		
Virginia Rail	2																		2
American Coot	3	1	1	cw	64						9	338		1	1	cw			
Killdeer																	3		
Common Snipe		1						1	1		1				3				
Bonaparte's Gull	2		15																
Ring-billed Gull	559	827	329	1035	1686	43	30	744 hc	543	109	205	278	13hc	1059	44	4	315		
Herring Gull	426	290	75	238	1442	36	12	1117 hc	34	11	20	20		5027	97		821		
Thayer's Gull	3	1	2	1															
Iceland Gull					1*														
Lesser Black-backed Gull		1* nc						1* nc											
Glaucous Gull	1							1						1					
Great Black-backed Gull					2*														
gull sp.		268		250	9		16	523	45						1				
Rock Dove	263	768	2200	902	1149	363	295	664	490	368	239	177	211	271	979	514	229	520	
Mourning Dove	688	456 hc	115	31	497	192	359	624 hc	185	504	241	282	141	202	446	814 hc	211	172	
Eastern Screech-Owl	7	10	8				2	3	22	3	4	1	2	1		5 hc	2	3	
Great Horned Owl	5	10	4		2	9	9	20	9	15	3	1	13hc	5	14	11	3	6	
Snowy Owl (invasion year)	3	1	3	7 hc, rn										2					
Barred Owl										1		1		2	11	5	1		
Long-eared Owl	cw						10	1		3									
Short-eared Owl		2				4	2	12 hc						2	4				
Belted Kingfisher	5	10	4	cw	3	5	2	9	7		5	6	2	5	1	7	4		
Red-headed Woodpecker	1	1			2		1	2		21	4	4			17	3	5	3	
Red-bellied Woodpecker	36	74 hc	13		16	26	15	56	85	34	13	30	18hc	14	63	64	37	8	
Yellow-bellied Sapsucker	1					1		2					1			cw			
Downy Woodpecker	95	213	80	6	62	83	59	182	196	70	37	99	75hc	30	166	161	90	28	
Hairy Woodpecker	24	64	23		6	7	6	16	43	7	4	7	2	5	29	36	16	6	
Northern Flicker	2	4	1		1	1	1	18	10	10	4	13	6	11	5	17	9	4	
Pileated Woodpecker															1				
Eastern Phoebe					1*			1* nc											
Horned Lark		2				8	2	19			11	36	35	77	120	120	20	137	
Blue Jay	63	87	15		175	36	36	69	158	201	38	62	63	58	154	177	56	46	
American Crow	633	1633	801	97	554	655	3536	1068	729	536	577	109	1934	167	2412	4071	352	298	
Black-capped Chickadee	396	628	189	19	204	270	286	546	671	195	92	163	153hc	79	359	372	203	38	
Tufted Titmouse		1	1		10			9	9	37	4	29	cw	34	30	39	66	8	
Red-breasted Nuthatch	8	3	1		1	12	1		1	7	8		cw		4	1			
White-breasted Nuthatch	57	76	18		30	46	20	61	124	54	23	27	40hc	14	121	121	51	16	
Brown Creeper	15	18	25		3	6	13	35	19	3	13	53	6	17	34	39	64		
Carolina Wren	1	3						2	2	2	2	11		3		1	5		
Winter Wren			3					3				1				4 hc	2		
Marsh Wren					1*				1*						1*				
wren sp.					1														1
Golden-crowned Kinglet	3	1			1	6	1	3	12	5		10			8	5	7		
Eastern Bluebird																			1
Townsend's Solitaire																1*			1
Hennit Thrush			1					1											
American Robin	108	111	12			4	25	16	103	2	4		15hc			8	1	4	
Varied Thrush	1*ph																		1
Brown Thrasher								1											
Cedar Waxwing	138	59	10			21	116	137	179							83	1		
Northern Shrike	3	1				cw	4 hc	4	1		1	1			1				

Illinois '96 Christmas • Northern Counts

Species	WAUK	EVNS	CHI U	CHI L	CALU	MCHE	BARR	FERM	LISL	TCPF	JOLI	MOWI	DE KA	ILLI	ROCK	KISH	SRSP	FREE	TOTAL
European Starling	1562	1330	1800	44	948	562	918	1806	1704	1677	1054	2000	918	1074	2982	1397	10730	1932	
Yellow-rumped Warbler		4	3				1	1	1	1						3			
Northern Cardinal	273	405	124	4	165	124	191	288	327	222	56	101	111hc	80	262	341	153	50	
Eastern Towhee		2	1												1				
Spotted Towhee							1*, ps, vt												
American Tree Sparrow	476	1072	36	7	493	406	308	804	657	762	181	209	170	200	732	747	367	664	
Clay-colored Sparrow			2* NC, ph, ps, rn																2
Brewer's Sparrow				1* NC, ph, ps, rr															1
Field Sparrow					5 hc														
Savannah Sparrow		1*					1*							1*					
Fox Sparrow		2	1				cw		2			1		1	1	cw			
Song Sparrow	36	275 hc	6	1	79	11	55	123	111	32	20	31	39	13	58	108 hc	34	10	
Swamp Sparrow	8	33 hc	7 hc	2	19	1	9	23	42	7	3		40hc	6	7	4	7		
White-throated Sparrow	4	31	65 hc	1	9	3	5	15	16	11	5	1	1	3	6	8	2		
White-crowned Sparrow	1	23 hc	1		4		11					2			4	3 hc			
Dark-eyed Junco	865	1201	358	29	744	576	879	1202	1118	628	572	376	536	267	1259	1021	574	405	
Oregon form sparrow sp		2						8								1	2		
Lapland Longspur															25	62	2	3	
Snow Bunting			4							1				16	3	34			
Red-winged Blackbird	86	2	1		20		1	8	30	3	240	8	1	152	3			11839	
Eastern Meadowlark		9			1				4	4									
meadowlark sp.							2												
Yellow-headed Blackbird					1* ph														
Rusty Blackbird					2*				10		150			3			25		
Brewer's Blackbird								1*											1
Common Grackle	3	4	1		58		4		2	2	4	79		4				2472	
Brown-headed Cowbird	1		cw		40	2	1				2	33	3	169	3			2899	
blackbird sp.					6														
Purple Finch		5	2			1	1			8	cw	3		5		4	5	2	
House Finch	139	313	105		164	129	192	161	121	248	131	111	312hc	35	654	445	40	219	
Red Crossbill															1				
Common Redpoll	2																2		
Pine Siskin	3	2	15				1			12				1	1	2			
American Goldfinch	260	893 hc	172 hc	26	185	57	76	199	233	180	66	46	16	63	160	106	28	17	
House Sparrow	936	1921	2000	154	738	850	501	882	741	2017	438	264	600	518	1289	1468	795	1236	
exotics: [Monk Parakeet]	[3]			[12]	[20]														[35]
[Ringed-turtle Dove]									[2]		[11HC]	[63]							[176]
Total species	76	75	68	30	70	48	60	69	59	55	67	65	42	68	68	61	60	38	
Total individuals	22147	21015	12307	4172	14671	12390	29960	60893	16897	9246	12961	73558	7022	39711	25059	20254 hc	35744	6041	

Illinois '96 Christmas • North/Central Counts

SPECIES	WTPN	PRIN	VANP	Northern											Central					TOTAL	
				SCHA	SAVA	CL IA	PC IA	DA IA	ANDU	MU IA	MFRV	FGPR	CHAM	HMWD	BLOM	CLLK	DECA	CHIL	PEOR		CHAU
Pied-billed Grebe												1					21 hc	2			4
Double-crested Cormorant								43 hc									1			1	
Great Blue Heron		2		1		1	1	11				10 hc	4	4	1		2	21	7		27
Mute Swan																				2	13
Greater White-fronted Goose																	10 hc				
Snow Goose												cw	6	3		4					
Ross's Goose																1*					
Canada Goose	431	717	32			676	29	1407 hc	181	1060	1044	264	133	301	3100	1879	1396	676	1687	9552	
Wood Duck						1		2			2 hc						4	2			3
Green-winged Teal								4			1					2	3		2		
American Black Duck		1	12			75		22	4	3	8				2	6	64	15	21	1175	
Mallard	2	162	778			1362	131	3046	172	86	418	78	53	131	856	3125	2472	1960	466	30528	
Northern Pintail						1		2			cw					1	1				1
Northern Shoveler																1	5				
Gadwall								6			4					37	15	10	25	53	
American Wigeon						1		2			2 hc					2	1				
Canvasback						1		3									1	1			
Redhead								1									1				2
Ring-necked Duck								3			1					5	1				141
Greater Scaup								2 hc													1
Lesser Scaup							6	1	1							12	29		1	17	
Oldsquaw																2	2				
Common Goldeneye		7	105			78	339		36	19	14 hc					510	59	181	320	191	
Bufflehead																1			15	12	
Hooded Merganser								2								1	3			5	
Common Merganser	1	40	51			254	694 hc	115		15	4 hc					9	2	350	165	153	
Red-breasted Merganser							2														
merganser sp.												11									
Ruddy Duck																	1				
duck sp.											2	3	29								
Turkey Vulture											26 hc										
Bald Eagle		25		2	143	68	73	218	74	26						cw		82	36 hc	73	
adults		17		1	89	42	53	129	55	14						1-cw		53	26	43	
immatures		8		1	46	16	20	89	19	9								19	10	30	
unknown					8	10				3									10		
Northern Harrier			3	1		3	2				cw		1	9	2	1	cw				10
Sharp-shinned Hawk				1	1		3	4	1		1	5	1		1	2	1				
Cooper's Hawk	2				1	3	2	2	1	1	7	3	6		1	4	2	4	1	2	
Northern Goshawk				1																1*	5
Red-shouldered Hawk					1	1												1			
Red-tailed Hawk	29	21	8	43	14	29	20	47	25	23	19	28	26	23	10	20	14	51	44	45	
Rough-legged Hawk	8		1	1	1	1	3	1	2		1		2	2		2	1	4	5	6	
American Kestrel	16	4	1	9	1	15	12	44	10	11	8	17	21	11	13	21	16	33	27	14	
Peregrine Falcon								1													
hawk sp.								2			1										3
Ring-necked Pheasant	8		9	4		9	13	3	3	3	7	12	37	21	64	14	18	2		11	
Wild Turkey	7			85		2	75	8			2	5		2		1				1	

Illinois '96 Christmas • North/Central Counts

SPECIES	Northern														Central						TOTAL
	WIPN	PRIN	VANP	SCHA	SAVA	CLIA	PC IA	DA IA	ANDU	MU IA	MFRV	FGPR	CHAM	HMWD	BLOM	CLLK	DECA	CHIL	PEOR	CHAU	
American Robin	1			1		1	1	5					3	4	5	1			7	6	
Gray Catbird																	1				1
Northern Mockingbird															1	1	4	2		3	
Cedar Waxwing	14		8			73		26		4	34		17		7			27		37	
Northern Shrike			1	1																	18
Loggerhead Shrike								1													
European Starling	405	168	1241	287		935	803	2688	775	2647	953	1639	3113	183	472	1004	3437	1257	4459	638	
Yellow-rumped Warbler											19 hc					1	8	1		2	
Northern Cardinal	42	38	149	144	10	219	151	395	134	266	167	153	417	38	121	185	156	180	174	217	
Eastern Towhee											2										2
American Tree Sparrow	142	89	405	877	82	471	429	925	342	740	540	124	398	48	545	611	152	283	107	530	
Field Sparrow								2	2		15 hc	2	1	42	1						
Savannah Sparrow													1			2	1				
Fox Sparrow										1		2	1			1					
Song Sparrow	19	2	16	11	1	29	27	114	46	39	154	49	144	3	17	84	56	25	47	30	
Swamp Sparrow	10		2			4	4	32	1	1	64	14	11		3	20	18	6	1	7	
White-throated Sparrow	18	1	2	2		1	2	20	2	5	30	11	50		21	18	26	23	19	3	
White-crowned Sparrow	4	50				1	8			2	1	3	3				29			3	
Dark-eyed Junco	185	225	513	747	120	433	318	650	351	703	975	493	605	267	394	430 hc	200	534	548	553	
Oregon form				2													1				
sparrow sp.								10													
Lapland Longspur			37			50	3			26	9	3	147		1	677		10			
Snow Bunting			32	27		8	82										1				
Red-winged Blackbird			1			2	55	457	1		1	2		7		43		2	200	2592	
Eastern Meadowlark													1		1	49 hc		2			
meadowlark sp.				2		5															
Rusty Blackbird				1		1					3		6								
Common Grackle	2					5	3	50		2	ew		1	89	1		4	2	29	503	
Brown-headed Cowbird		8		5		8	65	75			18	5	522	4	1	8	26	45	10		
blackbird sp.				140																	
Purple Finch	20		2	1		7	4	17	3	19	3	4	6	79	1	2	5	3	1	17	
House Finch	74	111	44	69		120	330 hc	401 hc	20	185	94	73	419	41	108	12	47	29	97	3	
Red Crossbill																					58
Common Redpoll													1*				2*				7
Pine Siskin			2										1	6	2		1				
American Goldfinch	35	21	22	101		117	153	201	46	128	254	70	154	16	69	67	73	142	72	195	
House Sparrow	151	209	624	1437		850	1326	1840	1287	2269	559	381	2942	317	308	1183	866	1266	1289	539	
Eurasian Tree Sparrow										45 hc											365
Total Species	41	39	52	42	20	67	60	73	46	54	76	58	60	43	55	75	76	62	57	77	
Total Individuals	2220	3314	5269	4849	433	8008	6016	18296	4800	9525	261963	13713	11398	2246	7921	11679	10731	9289	18473	50813	

Illinois '96 Christmas • Central/South Counts

Species	Central						South														TOTALS	
	CRLK	SPFD	RUSH	MERE	WMER	QUIN	LINC	BIRD	KASK	BALK	RDLK	JACK	CROR	CYCR	CALK	UNION	HSLK	COLL	WRBV	PEMR		ELSA
Common Loon											1											1
Pied-billed Grebe		44 hc							2	24	7	47			cw	4			2	1		171
Horned Grebe		1										1										3
American White Pelican																				3		3
Double-crested Cormorant		2					1			5				10			1		1			91
Neotropic Cormorant																	f* NC,rrr					1
Great Blue Heron	30	4		8	18		2	4	27	162 HC	22	83	8	62	84		78	44	10	35	5	877
Tundra Swan	3*											1*			1							49
Mute Swan		7					6											4				317
Greater White-fronted Goose		1 nc											600 HC	cw	22		205 hc			7*		847
Snow Goose		2							3085	500	542	64	15505	250	7000 hc		20000 hc	1	850	53394 HC		101240
Ross' Goose										3*					16 HC		13 rn					36
Canada Goose	406	3650	367	150	91	511	497	302	820	763	4000	1140	25000	4308	52	19000	23000	1674	1455	2244	44	270530
Wood Duck	4					3						2	2		9	25				2		100
Green-winged Teal									8	2	24	1	2	1	26	25	8	21				149
American Black Duck	356	13								85		35	50	94	53	71 hc	2	12	6			2786
Mallard	10255	2000		15	21	357	27		176	197	312	463	674	13532	4900	4600	960	1344	346	20		242516
Northern Pintail		1								3	1		CW	cw	285	364	3	39	3			718
Northern Shoveler	1	8									5	61	cw	14	75	25	42	25				267
Gadwall	3	108		3					51	27	19	46	cw	4	351	70	15	354				1409
American Wigeon	1	13											2	cw	74	24	10	30				185
Canvasback		2		2							19	5	cw	cw	60	9	9					123
Redhead		1										6			3	1						27
Ring-necked Duck		1							1	5	7	30	9		167	24				4		413
Greater Scaup		2												cw								38
Lesser Scaup		29					3			24	66	289	cw	8	17	6	20	1	41			894
scaup sp.							1		60								15					735
Oldsquaw		3												2								46
White-winged Scoter												3										3
Surf Scoter		1																				2
Common Goldeneye		350							93	438		64	cw	29	9 hc	1	155	16	129	32		5253
Bufflehead		11					2		14	19	6	71	cw	cw					10			288
Hooded Merganser		17							2	7		305	cw	15	4			1	1			485
Common Merganser	10	100		9	297 hc					23	2	5	29	1			40					8296
Red-breasted Merganser		cw									3	2		2								236
merganser sp.																	10					21
Ruddy Duck		5					1					14			24		7		53			110
duck sp.							2															58
Black Vulture													60	cw				30				90
Turkey Vulture			3				43	1					42		2		35					156
Bald Eagle	62			99	49	311 hc			4	3	9	33	6	3	43	73	2	5	272	20		1857
adults	36			62	39	134				2	4	10	5	3	27	40	1	4	129	17		1058
immatures	26			37	9	173			3	1	5	22	1		15	30	1	1	143	1		755
unknown					1	4			1			1			1	3				2		45
Northern Harrier	14			3	2	1	2	4	1	4	3		1	77	6	20 hc	23	4	21	3		295
Sharp-shinned Hawk	1	1		2	1	1	2	2		2	1	3	2	4	5	2		2	2			83
Cooper's Hawk	1	1	2	2	4		1	1			2	2	1	1	1	5	1	2		1		125
accipiter sp.								3										1	1			9
Red-shouldered Hawk				1	2	2 hc				3	7		9		6	19	2	8				63
Red-tailed Hawk	37	21	13	20	29	40	31	21	4	34	33	42	45	92	23	73	40	30	67	46	13	2072
Rough-legged Hawk	3	2	1		3								1	5		1		2	1			94

Illinois '96 Christmas • Central/South Counts

Species	Central						South														TOTALS		
	CRLK	SPFD	RUSH	MERE	WMER	QUIN	LINC	BIRD	KASK	BALK	RDLK	JACK	CROR	CYCR	CALK	UNION	HSLK	COLL	WRBV	PEMR		ELSA	
Golden Eagle	1 imm													1 ad.		2							4
American Kestrel	16	18	6	7	9	36	13	31	8	14	24	35	21	39	22	70 hc	54	32	58	17	7	1128	
Merlin	1 dd																					2	
Peregrine Falcon		cw																				5	
hawk sp.								1										2	4			17	
Ring-necked Pheasant	5	4			16						1											475	
Wild Turkey	5		46		1	cw	4						17	12	3	154	1		46	5		372	
Northern Bobwhite	29	12	14	13	23	4		11	3	25	16	4	43	60	12		22	15	9	38		430	
American Coot		24						317		18	4	33	55	cw	13	1	1	51	1	3		1039	
Killdeer	1							4			1	1	1	5		11	35	3		2		79	
Common Snipe	2				2									3			1			1		27	
American Woodcock																1						2	
Bonaparte's Gull		100									3		1									123	
Ring-billed Gull		868		615		145			4	338	2365	21	5745	67	5277	167	166	566	7	219	3325	34391	
Herring Gull		25		4	4	1				6	56	245		6	17			1		7	6	13261	
Traill's Gull															1							11	
Lesser Black-backed Gull		cw																				2	
gull sp.														60								1515	
Rock Dove	13	180	3	3	209	90	187	23		62	60	212	23	10	119	111	26	271	23	30	43	17073	
Band-tailed Pigeon		1 NC ph.vt																				1	
Mourning Dove	141	508	19	79	140	205	325	361	57	48	177	183	75	572	53	324	554	194	208	132	25	10540	
Eastern Screech-Owl		3		1	6					1	2	9		3	4	3	9			4		189	
Great Horned Owl		9		1	23	3		2		2	2	7	4	3	5	4	19 hc	4	4			354	
Snowy Owl															cw							16	
Barred Owl	4	6		2	9	1		8	3	4	1	10	1	4	5	9	9	1	8	2		163	
Long-eared Owl					1						3 hc									1		26	
Short-eared Owl					1					1			1	13	1					1		46	
Northern Saw-whet Owl					1																	3	
Belted Kingfisher	5	10		1	6	7	2			1	5	13	2	2	3	12	18		6	5	4	264	
Red-headed Woodpecker	1	11	13		10	9	27	21	4	6	19	34	16	76	16	54	43	5	7	11		640	
Red-bellied Woodpecker	44	91	12	33	60	49	60	34	7	17	22	85	40	67	34	170	179	27	47	90	18	2513	
Yellow-bellied Sapsucker		1		2						1		1		4		13	7		2	1	1	49	
Downy Woodpecker	47	110	21	37	144	62	30	52	5	23	19	84 hc	29	78	35	207	276 hc	37	27	59	9	4349	
Hairy Woodpecker	11	15		4	32	10	2	11	1	7	7	8	5	21	13	47	74 hc	3	11	14		840	
Northern Flicker	17	51	8	2	6	14	11	19	2	10	23	43	31	60	8	142	248	19	66	25	2	1188	
Red-shafted Flicker form																	1					1	
Pileated Woodpecker	3	8		1	8	6	1	3		8	2	28	4	27		61	68 hc	4	26	19	4	350	
Eastern Phoebe		cw																				2	
Horned Lark	42	7	3	6	12	21	1329	427		45	169	42	19	143	61	84	339	26	15	26		5164	
Blue Jay	41	245	41	43	144	126	118	246	31	20	147	182	261	158	103	176	158	47	84	41	48	6070	
American Crow	545	770	112	3721	4177	120	422	190	20	86	169	196	236	171	111	280hc	114	1136	485	222	48	304792	
Black-capped Chickadee	82	222	64	66	177	80		37										42		111	64	7918	
Carolina Chickadee							55	153	16	55	84	354	69	201	94	268	452	14	104			2295	
Tufted Titmouse	53	139	51	38	65	37	76	126	14	51	64	291	69	168	60	215	306	26	123	94	85	3389	
Red-breasted Nuthatch			2	1			1	3				2		2		2	3	1	2	1		70	
White-breasted Nuthatch	44	62	27	20	110	41	26	48	3	21	14	82	10	63	19	146	122	8	40	57	12	2832	
Brown Creeper	13	31		8	35	1	1	7		1	9	4	2	4	13	46	38	9	10	6	1	891	
Carolina Wren	15	61 hc	3	27	5	14	5	23		20	13	58 hc	27	33	20	178	312 hc	16	46	32	8	1119	
House Wren		1																				2	
Winter Wren								1			1	2	1	5		27	29	1	5	3		113	

Illinois '95 Christmas • Central/South Counts

Species	Central										South										TOTALS	
	CRLK	SPFD	RUSH	MERE	WMER	QUIN	LINC	BIRD	KASK	BALK	RDLK	JACK	CROR	CYCR	CALK	UNION	HSLK	COLL	WRBV	PEMR		ELSA
Golden-crowned Kinglet	11	6		1	4		2	1		1	28	38	17	36	20	60	45	2	60	5	468	
Ruby-crowned Kinglet				1				1						5		18	22	2			55	
Eastern Bluebird	5	2	3	6	1	5	6	26	4	9	30	92	65	75	4	154	192 hc	8	238	24	1026	
Hermit Thrush														3	3	3		6			19	
American Robin	7	14	1	1		4	1	5	9	4	5	41	4	3	6	55	47	10	56	6	732	
Northern Mockingbird	1	10		4		2		18	2	10	5	36	17	36	2	13	31	7	28		241	
Brown Thrasher								1			1		5	2			2			1	13	
American Pipit																	23*				23	
Cedar Waxwing		25	2	16						15			1125	7	15	19		13	15		2258	
Loggerhead Shrike					1	1		5		1	2	5	1	10	5	1	7		7	1	48	
European Starling	1028	1216	115	423	1376	697	2105	2287	288	1594	41832	2289	1040	4255	2031	677	881	2041	1931	1698	816	132162
Yellow-rumped Warbler	6			1								9		17	3	66	66		13		226	
Pine Warbler																1*			1*		2	
Northern Cardinal	218	241	109	112	326	161	269	314	44	106	184	486	231	516	233	551	777	127	290	209	95	12232
Indigo Bunting															1*		1*				2	
Eastern Towhee							1	1				3	5	10	6	cw	5		8		72	
Spotted Towhee				1												1 nc					3	
American Tree Sparrow	467	191	18	84	1512	143	100	39	2	29	66	28	39	247	106	120	42	27	10	89	19490	
Field Sparrow	1	2					15	30			3	12	7	14	9	44	111		93		411	
Savannah Sparrow								3			2	1		3		32 hc	46	4		1	99	
Le Conte's Sparrow														1			1				2	
Fox Sparrow			1				1			4	2	3	2	12	2	1	36	1	3		81	
Song Sparrow	44	42	1	76	95	38	54	15		32	98	204	42	306	96	372	503	41	84	121	4219	
Lincoln's Sparrow					1									2 ud							3	
Swamp Sparrow	5	2		10	21	2	5	2		5	56	36	1	53	16	285	156		6	24	1101	
White-throated Sparrow	13	23		17	2	8	3	11	3	91	84	331	76	228	19	740	1498 hc	38	123	165	6	3919
White-crowned Sparrow		1	16	3	2	3	16	2		3	9	75	2	136	3	147 hc	36	1	58	30	696	
Dark-eyed Junco	588	351	60	177	1220	213	984	361	80	210	338	574	679	484	271	658	1152	114	700	345	53	31466
Oregon Junco form																	1				9	
Lapland Longspur	47						1				6	7		38	47	71	540	2			1814	
Snow Bunting					1																209	
sparrow sp.										20											38	
Red-winged Blackbird	82	134		25	35			11		2612	42000	1612	18687	12212	401	900	10000	312	1070	11876	114363	
Eastern Meadowlark		1					3	29	7		26	30	81	385	4	94	316 hc	10	74	53	1184	
Western Meadowlark																	2				2	
meadowlark sp.										48											57	
Yellow-headed Blackbird											1*										2	
Rusty Blackbird		1	1					52		9	29		6	32		4	460	3			798	
blackbird sp.								3		1630			1675	10928	3	1	1100			82	15568	
Common Grackle	1	9	129	49	2			164		1822	1000000	4080	19509	21038	8	211	2500	273	2737	1450	2	1057308
Brown-headed Cowbird	10	7		4	56			48	2		7600	6	4234	1691	15	370	2500	44	327		20867	
Purple Finch		6	16		4		1	14				10		18	cw	7	8	1	6		321	
House Finch	6	86	32	2	48 hc	103	101	126		16	51	245	56	589	525	53	140	45	144	10	28	8202
Red Crossbill				cw-2																	59	
Pine Siskin								8													57	
American Goldfinch	323	203	215	44	140	145	135	67	2	137	63	302	60	132	1370 HC	382	565	49	25	123	41	9242
House Sparrow	374	989	373	244	1948	472	1041	940	106	139	195	251	49	163	857	170	313	214	67	691	250	46857
Eurasian Tree Sparrow	437	41	42	581	91 hc	31												25		312	4	1974
Total species	63	84	39	58	62	48	47	66	30	64	81	77	82	85	73	94	94	73	81	72	38	
Total individuals	16042	13597	1965	6919	12554	4633	8117	7107	1552	13763	1101770	15315	81209	77278	26332	41608	75440	10133	13993	75194	5167	

Summary of All-Time High Counts from Illinois Christmas Bird Counts

by David B. Johnson

The following updated counts were compared with Bohlen's (1977) and Robinson's (1990) previously published accounts of all-time high counts for species recorded on Illinois Christmas Bird Counts. Refer to Bohlen and Robinson for information on methodology. All species on this list have been recorded in Illinois. Any additions or deletions in the last 20 years have been approved by the Illinois Ornithological Records Committee. Count names are the National Audubon Society's Christmas Bird Count names. When necessary, the four-character abbreviations of the count names are those used in this journal.

Acknowledgments

I thank H. David Bohlen, Vernon M. Kleen, and Eric Walters for reviewing this list, and Douglas Robinson for his 1990 update. Any errors of omission are mine.

Literature Cited

Bohlen, H. D. 1977. Summary of all-time high counts of Illinois Christmas Bird Counts. Illinois Audubon Bulletin 182:20-22.

Robinson, W.D. 1990. Summary of all-time highest counts from Illinois Christmas Bird Counts. Illinois Birds and Birding 6:39-40.

— David B. Johnson, 504 Crown Point Drive, Buffalo Grove, IL 60089

Highest Number of individuals recorded within an Illinois Christmas Bird Count Circle

SPECIES	NUMBER	COUNT NAME	YEAR (19--)				
Red-throated Loon	1	-----	51;56;91;93;94	Canada Goose	350,000	Horseshoe Lake	89
Pacific Loon	1	Clinton Lake	92	Wood Duck	613	Horseshoe Lake	86
Common Loon	10	Rend Lake	94	Green-winged Teal	357	Pere Marquette Park	42
Yellow-billed Loon	1	Van Petten	86	American Black Duck	20,000	Chautauqua NWR	43
Pied-billed Grebe	76	Union County	93	Mallard	650,000	Chautauqua NWR	42; 45
Western Grebe	1	Waukegan	94	Northern Pintail	10,075	E. St. Louis	55
Horned Grebe	21	Crab Orchard NWR	84	Blue-winged Teal	103	Pere Marquette Park	39
Red-necked Grebe	1	Springfield	75	Northern Shoveler	289	Cypress Creek	94
Eared Grebe	1	CROR,BIRD,SPFD	53, 57; 81; 92	Gadwall	1071	Chautauqua NWR	94
American White Pelican	20	Pere Marquette Park	93	Eurasian Wigeon	1	Clinton Lake	92
Northern Gannet	1	Davenport, IA (but in IL)	93	American Wigeon	500	Pere Marquette Park	66
Double-crested Cormorant	846	Rend Lake	94	Canvasback	569	Pere Marquette Park	67
Neotropic Cormorant	1	Horseshoe Lake	96	Redhead	164	Waukegan	94
American Bittern	1	-----	35; 68; 74; 87	Ring-necked Duck	3,065	Rend Lake	93
Great Blue Heron	162	Rend Lake	96	Greater Scaup	2,815	Evanston North Shore	94
Great Egret	3	Joliet	94	Lesser Scaup	4,250	Calumet City-Sand Ridge	71
Little Blue Heron	1	Collinsville	87	King Eider	1	Morris-Wilmington	94
Cattle Egret	1	Crane Lake-Sangamon	93	Harlequin Duck	3	Waukegan	76
Green Heron	1	-----	59; 72; 84; 85; 86	Oldsquaw	17,669	Chicago	52
Black-crowned Night-Heron	22	Calumet City-Sand Ridge	90	Black Scoter	3	Chicago	06
Tundra Swan	44	Lisle Aboretum	94	Surf Scoter	5	Evanston North Shore	69;94
[Trumpeter Swan]	[6]	Clinton Lake	94	White-winged Scoter	266	Evanston North Shore	70
Mute Swan	244	Calumet City-Sand Ridge	96	Common Goldeneye	5,213	Waukegan	51
Greater White-fronted Goose	600	Cypress Creek	96	Barrow's Goldeneye	1	-----	57; 60; 65
Snow Goose	53,394	Pere Marquette Park	96	Bufflehead	107	Calumet-Sand Ridge	94
Ross' Goose	16	Union County	96	Hooded Merganser	356	Crab Orchard NWR	57
Brant	1	Waukegan, Union County	82;92	Common Merganser	50,040	Morris-Wilmington	87
				Red-breasted Merganser	2,798	Chicago	55

Highest Number of individuals recorded within an Illinois Christmas Bird Count Circle

SPECIES	NUMBER	COUNT NAME	YEAR (19--)	SPECIES	NUMBER	COUNT NAME	YEAR (19--)
Ruddy Duck	225	Chautauqua NWR	57	Great Black-backed Gull	4	Calumet City-Sand Ridge	81
Black Vulture	100	Cypress Creek	93	Mew Gull	1	Davenport, IA (but in IL)	93
Turkey Vulture	236	Cypress Creek	94	Black-legged Kittiwake	2	Waukegan	87
Osprey	2	Lake County	63	Ivory Gull	1	Chicago Urban	91
Bald Eagle	327	Pere Marquette Park	88	Rock Dove	9,000	Chicago Urban	83
Northern Harrier	73	Cypress Creek	94	Band-tailed Pigeon	1	Springfield	96
Sharp-shinned Hawk	13	Pere Marquette Park	50	Mourning Dove	1,438	Bird Haven Sanctuary-Olney	76
Cooper's Hawk	14	Fermilab--Batavia	95	Common Ground-Dove	1	Union County	81
Northern Goshawk	8	Barrington	73	Barn Owl	6	Cypress Creek	93
Red-shouldered Hawk	33	Horseshoe Lake	83	Eastern Screech-Owl	51	Evanston North Shore	87
Red-tailed Hawk	184	Schapville	94	Great Horned Owl	52	Beverly	84
Rough-legged Hawk	73	De Kalb	71	Snowy Owl	8	Calumet City-Sand Ridge	81
Ferruginous Hawk	1	Crane Lake-Sangamon	81	Barred Owl	35	Horseshoe Lake	87
Golden Eagle	4	Union County	73	Long-eared Owl	38	Rockford	61
American Kestrel	111	Cypress Creek	94	Short-eared Owl	19	Cypress Creek	94
Merlin	3	Pere Marquette Park	42	Northern Saw-whet Owl	3	Kishwaukee	95
Peregrine Falcon	4	Chicago Lakefront	95	Belted Kingfisher	28	Forest Glen Preserve	65
Prairie Falcon	1	-----	84; 85; 86; 87; 88;92	Red-headed Woodpecker	738	Cypress Creek	94
Gray Partridge	41	Freeport	84	Red-bellied Woodpecker	351	Union County	83
Ring-necked Pheasant	619	Thorn Creek-Park Forest	74	Yellow-bellied Sapsucker	77	Union County	76
Ruffed Grouse	4	Union County	86	Downy Woodpecker	374	Union County	83
Greater Prairie-Chicken	65	Bird Haven Sanctuary-Olney	53	Hairy Woodpecker	109	Cypress Creek	94
Wild Turkey	320	Schapville	94	Black-backed Woodpecker	2	Rockford	65
Northern Bobwhite	416	Chillicothe	74	Northern Flicker	291	Cypress Creek	94
King Rail	1	Chillicothe	67	Pileated Woodpecker	133	Union County	86
Virginia Rail	4	Waukegan	92	Least Flycatcher	1	Crane Lake-Sangamon	74
Sora	1	Rantoul; CROR; Joliet, WMER	12; 88; 89,94	Eastern Phoebe	3	Horseshoe Lake	86
Common Moorhen	1	Waukegan; CALU	75; 86;93;94	Say's Phoebe	1	Mermet; Beverly	67; 79
American Coot	2,500	Union County	93	Horned Lark	5,000	Urbana	57
Sandhill Crane	70	McHenry	94	Tree Swallow	1	Joliet	84
Black-bellied Plover	1	Calumet City-Sand Ridge	74	Barn Swallow	2	Murphysboro	55
Killdeer	467	Horseshoe Lake	93	Blue Jay	1,158	Meredosia Island	85
Greater Yellowlegs	3	Rend Lake	94	Black-billed Magpie	1	Barrington	74
Lesser Yellowlegs	3	Rend Lake	94	American Crow	255,000	Middle Fork River Valley	96
Spotted Sandpiper	1	Bird Haven Sanctuary-Olney	92	Fish Crow	3	Horseshoe Lake	91
Sanderling	1	Calumet City-Sand Ridge	79	Black-capped Chickadee	1,061	Evanston North Shore	83
Least Sandpiper	16	Rend Lake	94	Carolina Chickadee	676	Union County	83
Pectoral Sandpiper	1	Chillicothe	80	Tufted Titmouse	470	Horseshoe Lake	83
Purple Sandpiper	1	Waukegan	61	Red-breasted Nuthatch	188	Crab Orchard NWR	76
Dunlin	1	Pere Marquette Park; Waukegan	66; 88	White-breasted Nuthatch	245	Union County	83
Whimbrel	1	Morrison	47	Brown Creeper	110	Rockford	95
Common Snipe	65	Mermet	66	Rock Wren	1	Horseshoe Lake	75
American Woodcock	4	Peoria	70	Carolina Wren	312	Horseshoe Lake	96
Pomarine Jaeger	1	Crab Orchard NWR	83	Bewick's Wren	2	-----	03; 04; 06; 50; 51; 52; 56
Parasitic Jaeger	1	Chicago Lakefront	74	House Wren	4	Horseshoe Lake	85
Laughing Gull	1	Chautauqua; Springfield	81; 86; 87	Winter Wren	38	Union County	87
Franklin's Gull	9	Springfield	37	Sedge Wren	2	Pere Marquette Park, CROR	72; 87
Little Gull	4	Chicago Lakefront	80	Marsh Wren	2	E. St. Louis; HSLK, JOLI; SPFD	52; 83; 84
Bonaparte's Gull	1,000	Waukegan	42	Golden-crowned Kinglet	206	Evanston North Shore	74
Ring-billed Gull	20,000	Carlyle Lake	93	Ruby-crowned Kinglet	53	Crab Orchard NWR	76
Herring Gull	10,890	Peoria	79	Eastern Bluebird	199	Union County	94
Thayer's Gull	7	Waukegan	87;94	Townsend's Solitaire	1	LISL, WAUK, KISH	59,95,96
Iceland Gull	1	-----	52; 56; 84; 85; 87; 88; 89	Swainson's Thrush	1	W. Mercer County, EVNS	65;93
Lesser Black-backed Gull	3	Calumet City-Sand Ridge	91	Hermit Thrush	35	Horseshoe Lake	87
Glaucous Gull	10	Calumet City-Sand Ridge	93	Wood Thrush	1	Pere Marquette Park	76

Highest Number of individuals recorded within an Illinois Christmas Bird Count Circle

SPECIES	NUMBER	COUNT NAME	YEAR (19--)	SPECIES	NUMBER	COUNT NAME	YEAR (19--)
American Robin	1,970	Evanston North Shore	86	White-throated Sparrow	1,498	Horseshoe Lake	96
Varied Thrush	1	-----	51; 56; 57; 86; 89; 95,96	White-crowned Sparrow	305	Horseshoe Lake	86
Gray Catbird	2	W. Mercer County	65	Golden-crowned Sparrow	1	Van Petten	88; 89
Northern Mockingbird	199	Crab Orchard NWR	72	Harris' Sparrow	6	W. Mercer County	64
Sage Thrasher	1	Evanston North Shore	70	Dark-eyed Junco	2737	Rockford	85
Brown Thrasher	31	Horseshoe Lake	84	Lapland Longspur	3115	Bloomington-Normal	68
Curve-billed Thrasher	1	Rend Lake	92	Snow Bunting	2133	De Kalb	84
American Pipit	55	Horseshoe Lake	95	Red-winged Blackbird	1,037,000	Rend Lake	93
Sprague's Pipit	2	Shelbyville Reservoir	69	Eastern Meadowlark	591	Bird Haven Sanctuary-Oney	76
Bohemian Waxwing	19	Moline	48	Western Meadowlark	80	Rockford	70
Cedar Waxwing	1,279	Middlefork River Valley	89	Yellow-headed Blackbird	2	Waukegan	90
Northern Shrike	8	Waukegan	95	Rusty Blackbird	5,000	Horseshoe Lake; CROR	75; 76
Loggerhead Shrike	48	Horseshoe Lake	83	Brewer's Blackbird	22	Waukegan	90
European Starling	900000	DeQuoin	64	Common Grackle	1,617,000	Rend Lake	93
White-eyed Vireo	2	Chicago Urban	83	Brown-headed Cowbird	310,800	Rend Lake	95
Northern Parula	1	Middlefork River Valley	92	Northern Oriole	1	Lisle Arboretum, EVNS	72; 76
Orange-crowned Warbler	2	Chicago Urban	80; 84	Pine Grosbeak	80	Lisle Arboretum	77
Nashville Warbler	2	Chicago Urban	83; 84	Purple Finch	276	Rockford	59
Yellow Warbler	1	Chicago Urban	84	House Finch	708	Union County	94
Magnolia Warbler	1	Joliet	82	Red Crossbill	66	Lisle Arboretum, Barrington	61; 73
Cape May Warbler	3	Chicago Urban	83	White-winged Crossbill	47	Lisle Arboretum	66
Yellow-rumped Warbler	355	Crab Orchard NWR	63	Common Redpoll	204	Morris-Wilmington	70
["Audubon's" Warbler]	1	Calumet City-Sand Ridge, CRLK	80;92	Pine Siskin	598	Lisle Arboretum	72
Pine Warbler	5	Crab Orchard NWR	94	American Goldfinch	1370	Carlyle Lake	96
Palm Warbler	8	Chicago Urban	83	Evening Grosbeak	109	Rockford	81
Bay-breasted Warbler	1	Chicago Urban; Springfield	84; 88	House Sparrow	255000	Chicago Urban	74
Black-and-white Warbler	1	Horseshoe Lake, Springfield	75,93	Eurasian Tree Sparrow	1490	Meredosia Island	86
American Redstart	1	Chicago Urban	84				
Prothonotary Warbler	1	Chicago Urban	83				
Ovenbird	1	Springfield	83				
Northern Waterthrush	1	SPFD; CHI U; CRLK	57; 76; 81				
Common Yellowthroat	5	Union County	93				
Wilson's Warbler	1	Chicago Urban, Union County	83				
Yellow-breasted Chat	1	Shelbyville Reservoir	68				
Northern Cardinal	1,529	Horseshoe Lake	84				
Rose-breasted Grosbeak	1	PEOR, EVNS, ROCK, LISL, EVNS	69;76;79;84;92				
Indigo Bunting	5	Union County	85				
Dickcissel	1	-----	66; 70; 73; 75; 76; 84				
Green-tailed Towhee	1	Union County	86				
Rufous-sided Towhee	84	Crab Orchard NWR	84				
Spotted Towhee	1	Morris--Wilmington, Horseshoe Lake	95				
American Tree Sparrow	4,599	Thorn Creek-Park Forest	83				
Chipping Sparrow	3	Calumet City-Sand Ridge	71				
Clay-colored Sparrow	2	Chicago Urban	96				
Brewer's Sparrow	1	Chicago Lakefront	96				
Field Sparrow	282	Horseshoe Lake	84				
Vesper Sparrow	6	Rockford, Joliet, HSLK	57; 81				
Savannah Sparrow	67	Horseshoe Lake	85				
Grasshopper Sparrow	1	Murphysboro	49				
Henslow's Sparrow	1	Murphysboro; W. Mercer Co.	51; 65				
LeConte's Sparrow	66	Rend Lake	77				
Fox Sparrow	72	Horseshoe Lake	84				
Song Sparrow	894	Union County	94				
Lincoln's Sparrow	6	Horseshoe Lake	83				
Swamp Sparrow	654	Union County	94				

EXOTICS

[Bar-headed Goose]	1	CROR; MFRV	62; 87
[Monk Parakeet]	27	Chicago Lakefront	94
[Ringed Turtle-Dove or variant of African or Eurasian Collared-Dove]	111	Joliet	96

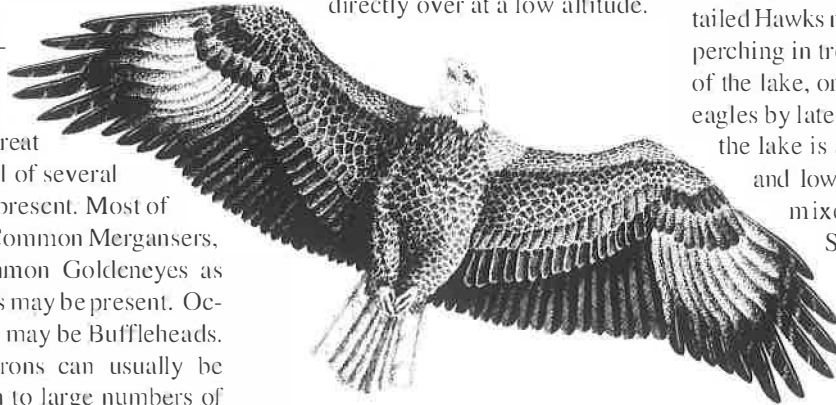
Eagle Watching at Lake Chautauqua in Winter

By Thomas V. Lerczak

Lake Chautauqua, a backwater of the Illinois River Chautauqua National Wildlife Refuge (4,488 acres, 40 miles southwest of Peoria, Illinois) attracts many bird species at all seasons. But in my opinion, it is the presence of overwintering Bald Eagles that makes winter the most interesting season for birding here. Bald Eagles are reliably present in varying numbers from late October through March, with numbers usually highest in January. Interactions among the eagles and other overwintering birds present exciting scenes that invite speculations on the motivations behind their behaviors and generate admiration for birds that can endure the sometimes extremely harsh weather conditions.

As long as there is an expanse of open water on Lake Chautauqua, a great many waterfowl of several species will be present. Most of them are often Common Mergansers, but many Common Goldeneyes as well as Mallards may be present. Occasionally there may be Buffleheads. Great Blue Herons can usually be seen in addition to large numbers of Ring-billed Gulls, which may be flying about picking small fish (mostly gizzard shad) from the water or standing in groups on the ice. A scan of the gull flocks usually yields a few Herring Gulls.

The mergansers find a ready source of food in the abundant gizzard shad that sometimes die in large numbers due to their low tolerance for very cold water. Bald Eagles are also heavily dependent upon these shad as a main food source, and can readily be seen flying over open waters in search of fish; many, however, simply stand on the ice or perch in trees, apparently watching the ducks for signs of sick or weak individuals; attacks by the eagles, though, are rare. The Mallards tend to stay in close-knit flocks either in the water or standing on the ice. If an eagle flies over the Mallards, the entire flock may take flight. Diving ducks, for example, mergansers, appear untroubled by the eagles, even if the eagles fly directly over at a low altitude.



Adult Bald Eagle drawing by Brian K. Willis.

Even though food may appear to be readily available, eagles can be observed stealing food from each other and from other species. Once, for example, I witnessed a large dead fish (probably a common carp or bigmouth buffalo) pass ownership among several different eagles over the course of an hour. Gulls, which also steal food from other gulls, normally maintain a respectable distance from the formidable eagles.

Other winter birds at the Chautauqua refuge include American Crows that fly about over the lake and along the river in search of whatever they can scavenge—most likely dead fish. In late fall and early winter, Northern Harriers patrol the lake back and forth in search of prey. Red-tailed Hawks may sometimes be found perching in trees along the perimeter of the lake, or soaring along with the eagles by late morning. Surrounding the lake is a narrow strip of forest and low shrubs that may yield mixed flocks of Swamp Sparrows, American and Eurasian Tree Sparrows, Song Sparrows, and Dark-eyed Juncos. In the forest the loosely aggregated winter foraging flocks moving among the trees in search of food may include Black-capped Chickadees, White-breasted Nuthatches, Tufted Titmice, Downy, Hairy, and Red-bellied Woodpeckers, and if you wait

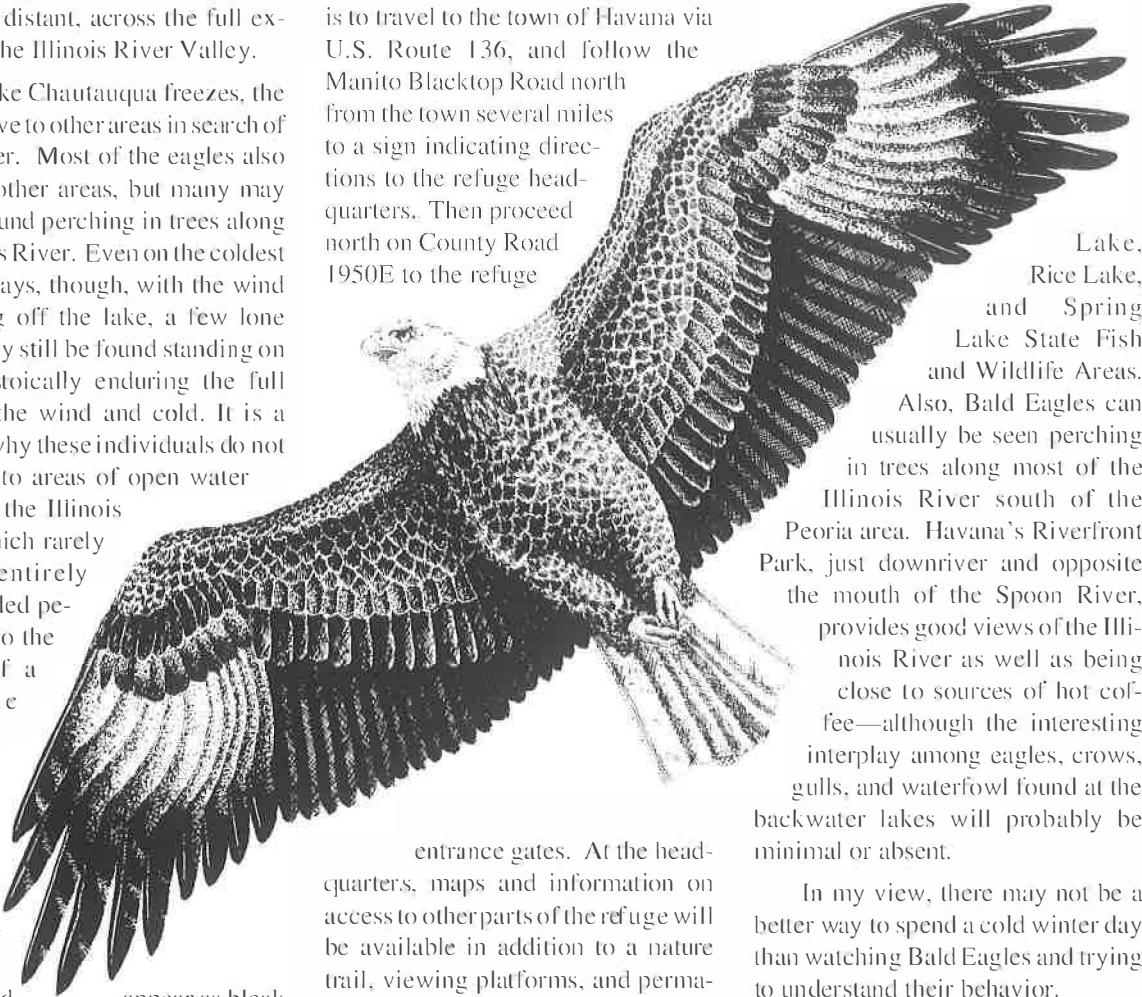
long enough, a Pileated Woodpecker. Soaring eagles are a common sight above the opposite river bluffs visible 3.5 miles distant, across the full expanse of the Illinois River Valley.

If Lake Chautauqua freezes, the ducks move to other areas in search of open water. Most of the eagles also move to other areas, but many may still be found perching in trees along the Illinois River. Even on the coldest subzero days, though, with the wind screaming off the lake, a few lone eagles may still be found standing on the ice, stoically enduring the full force of the wind and cold. It is a mystery why these individuals do not move on to areas of open water found on the Illinois River, which rarely freezes entirely for extended periods, or to the shelter of a daytime perching area with other eagles.

Because the lake may freeze and appear as bleak as any arctic landscape, the best time to visit Lake Chautauqua for eagles and overwintering ducks is probably

late December to early January, while there is still some open water. The easiest way to reach Lake Chautauqua is to travel to the town of Havana via U.S. Route 136, and follow the Manito Blacktop Road north from the town several miles to a sign indicating directions to the refuge headquarters. Then proceed north on County Road 1950E to the refuge

which may have open water with waterfowl and eagles. These include Anderson



Lake, Rice Lake, and Spring Lake State Fish and Wildlife Areas. Also, Bald Eagles can usually be seen perching in trees along most of the Illinois River south of the Peoria area. Havana's Riverfront Park, just downriver and opposite the mouth of the Spoon River, provides good views of the Illinois River as well as being close to sources of hot coffee—although the interesting interplay among eagles, crows, gulls, and waterfowl found at the backwater lakes will probably be minimal or absent.

In my view, there may not be a better way to spend a cold winter day than watching Bald Eagles and trying to understand their behavior.

— Thomas V. Lerczak
18134 N. CR 1615E
Havana, IL 62644

entrance gates. At the headquarters, maps and information on access to other parts of the refuge will be available in addition to a nature trail, viewing platforms, and permanently mounted spotting scopes.

If Lake Chautauqua is frozen with few birds about, there are several other Illinois River backwater lakes nearby

Eagle Identification Key

- 1A Head and tail white, body dark go to 2.
- 1B Head and tail other than described above go to 3.
- 2A Head and tail pure white, body dark Adult.
- 2B Head and tail dirty white (some dark feathers present), body dark Transition, 4th year.
- 3A Head, body, and tail generally dark, very little white in feathers 1st year.
- 3B Head and body has some (or too much white), especially in belly area go to 4.
- 4A Head has brown hood, belly; wing coverts very white 2nd year.
- 4B Head and breast brown; some white on belly; wing coverts with a scattering of dark in white 3rd year.

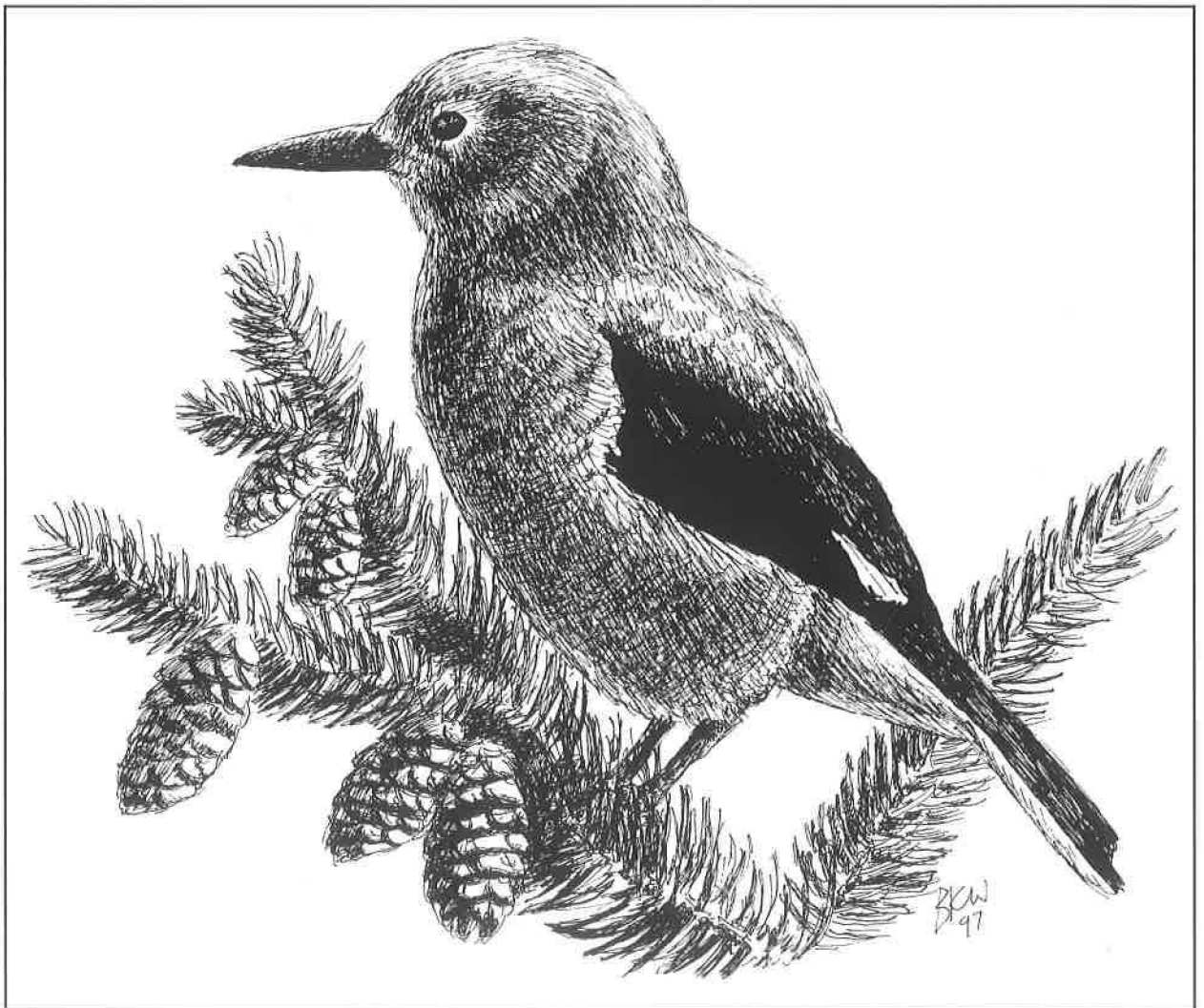
Clark's Nutcracker in Western Illinois

A Clark's Nutcracker (*Nucifraga columbiana*) was seen living, and later found dead, in Hancock County, western Illinois. It was first seen at the farm home of Britten and Martha Gray (9 miles east of Carthage Illinois, in section 22 of Hancock Township, Hancock County) on 27 December 1996 when Martha Gray rescued it from the jaws of a domestic cat. After the rescue, it hid under a parked truck, and then flew to a tree where it sat for about an hour. The area near the home includes some large white pine (*Pinus strobus*) plantations, swamp forest, upland forest, permanent pasture, and grain fields.

The bird was not seen again until it was found dead

and solidly frozen on 13 January 1997 at the same location on the lawn about 4 meters from the house, with no obvious injuries. The frozen bird was delivered to Ed and Evelyn Franks on 14 January 1997. It was later taken to the Department of Biological Sciences Bird Collection at Western Illinois University, Macomb, Curator Thomas Dunstan in turn sent it to the Illinois State Museum in Springfield as a more appropriate depository (specimen number 660433).

H. David Bohlen prepared the bird and confirmed that it was a female, with a mostly ossified skull. The specimen was in good condition, not noticeably dehydrated or



Clark's Nutcracker drawing by Brian K. Willis.

decayed. It exhibited one unusual deformity. The lower mandible protruded 6 mm beyond the tip of the upper mandible. A slight notch in the lower mandible, as if formed by abrasion from the tip of the upper mandible, indicated that the protrusion was a long-time condition.

The specimen weighed 155 grams (5.5 ounces), had a total length of 275 mm, and a tail length of 94 mm. The sex was female, as indicated by a wing chord of 178 mm, versus 180-202 mm for males (Pyle et al. 1987). The age at death was approximately 8 months (i.e., hatched in the spring of 1996), as indicated by the lesser secondary wing coverts being a distinctly glossier black than the middle coverts which were dull black with brown tips, and also as indicated by the difference in length between the innermost and outermost rectrices. These were only 9 mm, versus 15-35 mm for older birds (Pyle et al. 1987).

The normal range of this non-migratory species comes as close to Illinois as the west edge of Nebraska (Sauer et al. 1996). The species is prone to wandering in winter (Bent 1946). There are acceptable records from Iowa and Wisconsin, and there are several encounters from Illinois which Bohlen (1989) says do not meet the requirements for a state record "... although two of them came during

irruption years and are probably correct. The specimen from Gross Point [Cook County] cannot be located." He thus classifies the Clark's Nutcracker as hypothetical on the Illinois list. The present specimen should warrant discussion on whether to change the status of the species to very rare vagrant.

Literature Cited

Bent, A. C. 1946. Life histories of North American jays, crows, and titmice. U.S. National Museum Bulletin 191.

Bohlen, H. D. 1989. The birds of Illinois. Indiana University Press, Bloomington and Indianapolis, IN.

Pyle, P., S. N. G. Howell, R. P. Yunick, and D. F. DeSante. 1987. Identification guide to North American passerines. Slate Creek Press, Bolinas, CA.

Sauer, J. R., B. G. Peterjohn, S. Schwartz, and J. E. Hines. 1996. The North American breeding bird survey home page, version 95.1. Patuxent Wildlife Research Center, Laurel, MD.

—Edwin C. Franks, Evelyn C. Franks,
8495 N. 1250 Rd.,
Colchester, IL 62326

Brewer's Sparrow Winters at Lincoln Park Bird Sanctuary in Chicago

● On 27 November, 1996, while birding the Magic Hedge at Montrose Point along Chicago's Lake Michigan shore, I ran into fellow birder and Montrose habitue, Luis Munoz, who told me he had seen a small, grayish sparrow of unknown identity on the east side of the Lincoln Park Bird Sanctuary the day before.

Intrigued, I went to the bird sanctuary, a fenced-in woodlot south of Montrose near Waveland Golf Course. After searching for a few minutes, I found the bird. To my stunned amazement, the bird turned out to be a Brewer's Sparrow (*Spizella breweri*), a species normally associated with sagebrush flats in the western United States.



Brewer's Sparrow, Lincoln Park Bird Sanctuary, Chicago, 22 Feb. 1997. Photo by Robert Hughes.

In size, proportions and plumage, the bird was typical of the genus *Spizella* - small, with a relatively long emarginated tail, a small, conical bill and unstreaked underparts. The complete white eye-ring, finely-streaked nuchal collar and the absence of a pale median crown stripe were also apparent. ● Overall, the bird was pale and non-descript.

This sighting represents only the third record for Illinois, the first from Jackson Park in Chicago on 26 May 1982 and the second, a window casualty from McCormick Place in Chicago on 29 May 1986. The second bird is now a specimen in the Field Museum of Chicago (Bohlen 1989).

The Lincoln Park Brewer's Sparrow decided to make

the sanctuary its winter home, probably due to the copious amounts of seed put out by birders hoping to see this rarity. Many of them did get the chance. They also heard the bird singing beginning in April. The last person to see the bird at the sanctuary was Kanae Hirabashi, who reported it gone in early to middle May.

Literature Cited

Bohlen, H.D. 1989. *The Birds of Illinois*. Indiana University Press. Bloomington, IN.

—Robert Hughes,
696 W. Irving Park Rd.,
Chicago, IL 60613

Varied Thrush Winters in Lake County

Early on 23 November 1996, I spotted a bird at my feeder that at first glance I thought was a robin and at second glance I didn't have a clue. I ran to wake my sleeping kids excitedly yelling, "There is a bird at our feeder and I don't know what it is!"

Within seconds, three of us were jockeying for position with binoculars and bird books. The verdict was a Varied Thrush (*Ixoreus naevius*). After some discussion we decided to report "our" thrush to the Chicago Audubon hotline and open up our house to area birders who would like to look at this beautiful bird. I was amazed at how fast the word got out and how many people came. My guess is that some 200 people stopped by our home in Waukegan, Lake County, for two months to see the bird. One of them, Sheryl De Vore, took photographs which are on file with the Illinois Ornithological Records Committee. It was a wonderful, positive experience for the family.

The Varied Thrush is similar to the American Robin in color and shape. The male has a dark breast band which looks like a heavy black necklace. It has orange wing

bands and an orange stripe above the eye. The female is duller and sometimes lacks the breast band. This species is common in the moist coniferous woods of the northwest, from Alaska down to central California. Winter wanderers may rarely be seen as far east as New England.

Most Illinois records are from the northern portion between 21 November and 1 May (Bohlen 1989).

This ground-feeding bird typically eats insects, worms, snails, weed seeds, acorns, and wild berries. At my feeders, the thrush dined on whole corn. As of 27 January 1997, we thought the bird was gone. But it reappeared on 15 February 1997 and was still seen occasionally through at least 23 February 1997.

Literature Cited

Bohlen, H.D. 1989. *The Birds of Illinois*. Indiana University Press

—Carol Eucolono
733 Atlantic Av.
Waukegan, IL 60085

Two Wintering Clay-Colored Sparrows in Chicago

After birding the Chicago lakefront on 23 November 1996, Denis Bohm and I were returning to where Bohm had parked his car along Pearson and DeWitt Streets in Chicago, Cook County, about two blocks east of Water Tower Place near Michigan Ave. While walking, we noticed numerous White-throated Sparrows along the north side of Lake Shore Park near Pearson Street. At the north end of a tennis court, I noticed a smaller sparrow on the ground. This was a *Spizella* sparrow because it was smaller in size than the nearby House and White-throated Sparrows and had a rather sleek look and long tail.

The bird had a conspicuous median buffy crown stripe through the brown crown, buffy lores and supercilium, with a darkish eyeline below the supercilium that

did not extend in front of the eye. The auriculars were bordered by darker edgings contrasting with a whitish moustachial stripe. The bird also had a conspicuous gray nape. The sparrow was unstreaked below with a buffy upperbreast and otherwise white underparts. There were two slight buffy wing-bars on the light brownish wings. Dorsally, the bird had a long, thin, dark, blackish, forked tail. The bird's bill and legs were pink. The wings concealed the rump.

Bohm agreed this was a Clay-colored Sparrow. I thought late November was rather late for this sighting and I videotaped the bird as it hopped on the ground and foraged with House, Swamp, and White-throated Sparrows for bird seed under some ornamental crabapple trees and cement tables.



Clay-colored Sparrows, Chicago's Lakefront, 21 Dec. 1996. Photo by Eric Walters.

Later Robert Hughes, James Landing, Eric Walters, and other birders saw two Clay-colored Sparrows at this location. On 22 December 1996 during the Chicago Urban Christmas Bird Count, I photographed the two Clay-colored Sparrows together in one of the crabapple trees north of the tennis courts. These two birds were last seen by Steve Bailey on 18 January 1997 at this same location.

Illinois' only other winter record was one photographed by Jim Surman at a feeder in Bensenville, Du Page County on 30 January 1983 (an unpublished but accepted IORC record #1983.011).

Winter records of Clay-colored Sparrow in the Midwest are quite unusual. Minnesota had one record (Janssen 1987). Wisconsin had two records (Ficken and Gustafson 1996; Knicklebine 1995). Indiana had two records (Mumford and Keller 1984) and Missouri had two records (Robbins and Easterla 1991). In the appropriate season, the Clay-colored Sparrow is an occasional Illinois migrant, and a very rare breeding species near Rockford at the state's northern edge (Bohlen 1989).

Literature Cited

Bohlen, H. D. 1989. The birds of Illinois. University of Indiana Press, Bloomington, IN.

Ficken, M. S. and D. Gustafson. 1996. By the Wayside: Clay-colored Sparrow. *The Passenger Pigeon* 58:289-290.

Janssen, R. B. 1987. Birds in Minnesota. James Ford Bell Museum of Natural History. University of Minnesota Press, Minneapolis, MN.

Mumford, R. E. and C. E. Keller. 1984. The birds of Indiana. Indiana University Press, Bloomington, IN.

Robbins, M. B. And D. A. Esterla. 1991. Birds of Missouri their distribution and abundance. University of Missouri Press, Columbia, Missouri.

Knicklebine, J. 1995. By the Wayside: Clay-colored Sparrow. *The Passenger Pigeon*. 57:209-210.

— David B. Johnson,
504 Crown Point Drive,
Buffalo Grove, IL 60089

~ Corrigenda ~

Red-necked Grebe in Champaign County

Recently Elizabeth J. Chato reported a Red-necked Grebe (*Podiceps grisegena*) from Champaign, Illinois. Although she reported this as "...new record for Champaign County ..." (p. 137), it is really a second record. As a student at the University of Illinois (Urbana), I was shown many study specimens to examine as part of the late Dr. S. Charles Kendeigh's ornithology class. One of these was of an immature male Red-necked Grebe collected at Urbana, Illinois by Frank Smith, late professor of zoology at the University of Illinois (Urbana), on 21 February 1904. It is Z 1961 in the zoological collection at the University of Illinois.

I first reported this record in "The Audubon Bulletin" (1957). It was subsequently cited by H. David Bohlen

in *An annotated check-list of the Birds of Illinois* (1978). It was used as basic documentation for this species.

Literature Cited

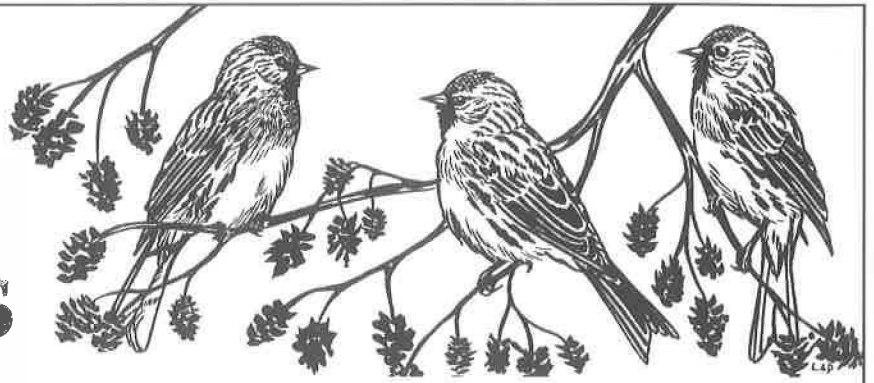
Bohlen, H. David. 1978. An annotated check-list of the Birds of Illinois, II. State Mus., Pop Sci. Ser., Vol. IX.

Chato, Elizabeth. 1995. Meadowlark 4:4.

Eiseman, Ralph M. 1957. *The Audubon Bulletin*, No. 101, March 1957.

—Ralph M. Eiseman,
Highland Park High School,
433 Vine Ave.,
Highland Park, IL 60035

Field Notes



Common Redpolls by Leslie A. DeCoursey.

The 1996-97 Winter Season

By Robert Danley

The 1996-97 winter season was great for vagrants and rarities. A first-state record was established for Band-tailed Pigeon, and first-time winter records were documented for Clark's Nutcracker, Neotropic Cormorant, and Brewer's Sparrow. For the first time in 83 years, a Boreal Owl was recorded in the state, and two Clay-colored Sparrows were recorded for the second time in winter. Other outstanding finds include Eurasian Wigeon, Pomarine Jaeger, Glaucous-winged Gull, Townsend's Solitaire, Varied Thrush, and Spotted Towhee.

Bird family trends varied. Waterbird highlights include late departing loons, only two species of grebes, late pelicans and cormorants, only three Trumpeter Swans, increasingly larger (huge?) spring stagings for western geese with many Canada Geese wintering north of their traditional southern Illinois areas, good numbers of Oldsquaws away from Lake Michigan, all three scoter species, and very large concentrations of Buffleheads. All the expected birds of prey were found in variable numbers.

Bald Eagles were found in record numbers. Harriers and Rough-legged Hawks were in scattered small groups, roughly not exceeding the low single digits. Accipiters had a very good season. Many were spotted near feeders. A handful of lucky observers found immature Goshawks. Red-tailed Hawks were in poor numbers most everywhere, although various morphs were reported. Numbers were about normal for Merlin and Peregrine Falcon, but somewhat below for American Kestrel.

Gamebirds were scarce except for Wild Turkey. The 10 species of gulls recorded were normal, but the sheer numbers at times were spectacular, especially at Mel Price

Lock & Dam (Mississippi River at Alton). In fact, this site may be wresting away from Lake Calumet the title for most outstanding place for watching gulls.

Snowy Owls invaded the Chicago area. Multiple sightings were recorded on many dates. A single bird made it as far south as Carlyle Lake. One of the nation's most sought after species, the Boreal Owl, made a brief appearance in a Rockford backyard. Wouldn't you like that on your yard list? The other owl species were almost as scarce as the Boreal with concentrations in the low single digits.

Sapsuckers were widespread in low densities. Some observers commented that passerines were more scarce than normal, especially at feeders. Red-breasted Nuthatch highlighted this trend. Robins and other berry-dependent species were uncommon. Most sparrow populations seemed lower, particularly White-crowned Sparrow. Bucking the trend were Dark-eyed Junco (2 "Oregon" type found), Lapland Longspur, and Snow Bunting, all widespread in good numbers.

The other expected group of visitors, winter finches, were just about totally absent. Only 2 reports of Pine Siskin and 1 of Evening Grosbeak were recorded.

Exciting late departing species include two Eastern Phoebes, two House Wrens, Marsh Wren, American Pipit, Loggerhead Shrike, White-eyed Vireo, Orange-crowned Warbler, and Indigo Bunting.

The weather during the winter season included warm periods along with seasonably cold temperatures. No extremes were recorded, and there was no prolonged fall

going into December, which has been the case previously for southern areas. Winter seemed to start in November. December precipitation was 50% of the norm for most of the state. Five inches of snow fell in the middle of the month in southern sections. Mean temperatures for the month were 2 degrees F below normal for the northern third and 2 degrees above normal for the southern third. January was the snowiest and coldest month. Precipitation was 100% of normal with the central part of the state receiving 150%. Snow accumulations were 10-18+ inches. The mean temperature was 5 degrees below normal. Precipitation continued above normal in February. The northern third of the state received 300% of normal totals. The mean temperatures were close to normal for February.

Special thanks go to all contributors listed here in full and by initials following each observation: Cindy Alberico, Renee Baade (RBa), Steve Bailey, Brad Bergstrom (BBm),

David Bohlen, Richard Biss, Karin Cassel, Robert Chapel, Elizabeth Chato, Paul Clyne, Bob Danley, Glyn Dawson, Myrna Deaton, Judy De Neal, Josh Engel, Carol Eucolano, Carolyn Fields (CFs), Robert Fisher, Matt Fraker (MFr), Michelle Georgi (MGe), Britten & Martha Gray (BGr), Brad Grover, Jim Herkert (JHe), Scott Hickman, Larry Hood, Robert Hughes, David Johnson, Steve Juhlin (SJn), Dan Kassebaum, Dan Kirk (DKk), Vernon Kleen, Dave Kvernes (DKs), James Landing, Walter Marcisz, Michael Madsen, John McDaniel (JMd), Cynthia McKee (CMc), Keith McMullen, Igal Milchtaich, Roy Morris (RMs), Lou Munoz, Bud Polk (BPK), Michael Retter, William Rowe, Frank Seppi (FSp), Wes Serafin, Darrell Shambaugh, James Smith, Alan Stokie, Paul Sweet (PSw), Jack Van Benthuyzen, Eric Walters, Richard Whitton (RWb), Dan Williams, Loraine Wright (LWR), Rick Wright, Jim Ziebol. Waterfowl survey reports from Michelle Georgi (MGe) are aerial survey estimates.

As a printing aide, the following abbreviations have been used throughout this report:

ad.	= adult	Bald. L	= Baldwin Lake (Randolph Co)
Co (s)	= County (ies)	Carl. L	= Carlyle Lake (Clinton & Bond Cos)
subad.	= subadult	CBG	= Chicago Botanic Gardens (Glencoe, Cook Co)
CA	= Conservation Area	CCNWR	= Cypress Creek NWR (Johnson & Pulaski Co)
1st	= 1st winter plumage	Chi	= Chicago's Lakefront Parks, excluding JP (Cook Co)
FP	= Forest Preserve	Clin. L	= Clinton Lake (De Witt Co)
2nd	= 2nd winter plumage	CONWR	= Crab Orchard NWR (Williamson Co)
FWA	= Fish and Wildlife Area	Fermi	= Fermilab at Batavia (Du Page Co)
3rd	= 3rd winter plumage	GLPSP	= Goose Lake Prairie SP (Grundy Co) & Heidecke L
est.	= estimated	HL	= Horseshoe Lake (Madison Co)
imm.	= immature	HLCA	= Horseshoe Lake CA (Alexander Co)
INHS	= IL Natural History Survey	IBSP	= Illinois Beach State Park (Lake Co)
*	= documented	JP	= Chicago's Jackson Park (Cook Co)
L	= Lake	LCal	= Lake Calumet & vicinity (Cook Co)
resp.	= respectively	LChau	= Lake Chatauqua NWR (Mason Co)
LD	= late departure	LCNP	= La Salle County Nuclear Plant (La Salle Co)
m.ob.	= many observers	MARb	= Morton Arboretum (Du Page Co)
L & D	= Lock & Dam	MM	= McKee Marsh (Du Page Co)
MC	= maximum count	Rend L	= Rend Lake (Franklin & Jefferson Cos)
NP	= Nature Preserve	SRSF	= Sand Ridge State Forest (Mason Co)
NC	= Nature Center	Spfld	= Springfield (Sangamon Co)
NWR	= National Wildlife Refuge	UCCA	= Union County Conservation Area
R	= River	Wauk	= Waukegan (Lake Co)
SF	= State Forest		
SP	= State Park		
IDNR	= Illinois Department of Natural Resources		
I.O.R.C.	= Illinois Ornithological Records Committee		

A number in parentheses () indicates the number of birds observed at a particular location or on a particular date. No number signifies single birds. Dates, counts or sites underlined and bolded represent very early/late dates or counts unprecedented or extremely significant for the state or that region.

FIELD NOTES

1996-1997 Winter Season

Red-throated Loon

LD: 7 Dec. (2), IBSP (PSw); 4 Dec., Wauk (SH); .

Pacific Loon

25 Dec. (3), CONWR (*BD).

Common Loon

LD: 7 Jan. (3), CONWR (BD); 6 Jan., Peabody River King SFWA (St Clair Co)(JV); 16 Dec., Spfld (DB); 8 Dec., Wauk (JL).

Pied-billed Grebe

Wintered. MC: 45, Spfld. 23 Jan. (DB); 18, CONWR, 3 Jan. (BD). LD: 4 Jan., Chi (AS); 11 Dec. (2), Crystal Lake (McHenry Co)(RBA).

Horned Grebe

Scarce. MC: 3, CONWR, 4 Jan. (BD). LD: 4 Jan., Fox R (Kane Co)(DS); 22 Dec., Spfld (DB); 7 Dec., IBSP (DB, MD, VK).

American White Pelican

May have wintered at these locations: 21 Dec. (2), MTNWR (WR); 21 Feb. (6), Calhoun Co (JV).

Double-crested Cormorant

Wintered (1) at Spfld (DB). MC: 10, Carl. L., 11 Jan. (DK). LD: 4 Jan., Lockport(CA); 4 Jan., LCal (AS); 25 Dec., Chi (DJ); 21 Dec., LCNP (CMc, JMc).

NEOTROPIC CORMORANT

1st winter record for state, 3 Jan., HLCA (*KM, MD).

Great Blue Heron

MC: 151, Rend L., 21 Dec. (KM, FB). LD: 31 Jan., Spfld (DB); 31 Jan., COI.SP(SH); 19 Jan., Peoria L. & D (Fazewell Co)(MR); 19 Jan. (2), Starved Rock L. & D (La Salle Co)(CMc); 18 Jan., Rockford(DW); 4 Jan., Will Co (CA).

Great Egret

LD: 15 Dec., Franklin Co (BD).

Black-crowned Night-Heron

28 Dec., LCal (WM); 21 Dec. (2), Skokie(EW).

Tundra Swan

All records, 22 Dec. (6), Palos (WS); 1-2 Jan. (8), St. Mary's Seminary (Lake Co)(AS, MM); 22-23 Feb. (5), Clinton Co (JV).

Trumpeter Swan

3, Carl. L., 17 Dec. (DK-2 were eventually found shot).

Mute Swan

MC: 90, Wolf L. (Cook Co), 8 Feb. (WM); 36, Kemper L. (Lake Co), in Jan. (CFs); 26, Druce L. (Lake Co), 1 Jan. (DJ); 11, Fox R (Kane Co), 12 Jan.—but 2 thru Feb (DS); 7, Spfld. 25 Dec. (DB).

Greater White-fronted Goose

"Greenland" race- 3 times/period, Winnebago Co (*BCG). Winter MC: 128, Sangamon Co, 18 Dec. (DB); 60, Carl. L., 24 Dec. (DK); 60, HLCA, 3 Jan. (KM, MD); 45, UCCA, 5 Jan. (BD); 25, Mel Price L. & D (Madison Co), all period (WR). Spring stagings MC: 600+, Clin. L., 22 Feb. (RC); 250, Sangamon Co, 19 Feb. (DB); 45, McLean Co, 23 Feb. (fide MFr); 36, LCNP, 23 Feb. (CMc).

Snow Goose

Winter MC: 25,000, CCNWR, 6 Jan. (RWh); 16,000, Rend L., 9 Dec. (RWh). For the most part, they didn't winter in these large "migrant" numbers. Spring stagings, tremendous numbers MC: 320,000, southern Illinois aerial survey, 17 Feb. (RWh); 100,000, Carl. L., 15 Feb. (KM, DK); 13,000, Sangamon Co, 18 Feb. (DB).

Ross's Goose

Winter MC: 5, Rend L., 15 Dec. (BD); 2, HLCA, 3 Jan. (KM, MD). Spring stagings MC: 10+, Sangamon Co, 19 Feb. (DB—many hybrid Ross'/Snow noted also); 7, Baldwin L. (Randolph Co), 17 Feb. (KM); 2, LCNP, 23 Feb. (CMc).

Canada Goose

The Mississippi Valley population "short stopped" in southern Wisconsin and north of traditional areas in southern Illinois. MC: 302,000, aerial survey of southern Illinois, 8 Jan. (RWh). Hunters only harvested 67 % of their quota or 24,479 birds.

Wood Duck

LD: 14 Jan., Spfld (DB); 4 Jan., Fox R (Kane Co)(DS); 22 Dec., Moraine View SP (McLean Co)(MR); 21 Dec., MM (EW); 7 Dec. (2 female), Illini SP (La Salle Co)(CMc).

Green-winged Teal

Wintered in small numbers. MC: 700, CCNWR, 10 Dec. (MGe). Others: 4, HLCA, 3 Jan. (KM, MD); pair wintered, M.Arb (m.ob.). LD: 2 Jan., Spfld (DB).

American Black Duck

MC: 3,500, Illinois R at Duck Creek, 9 Dec. (MGe). Others: 90, Carl. L., 22 Dec. (KM); 59, Illinois R at Seneca, 21 Dec. (DS).

Mallard

MC: 197,765, IDNR-District 7, area centered on LCNP, 9 Dec. Others: 1500, Spfld. 26 Dec. (DB).

Northern Pintail

Wintered in small numbers-south. MC: 4,400, Mississippi R-Calhoun Co, 9 Dec. (MGe). Others: 30, CONWR, 3 Jan. (BD); 25, UCCA, 4 Jan. (KM, DK); 8, LCNP, 7 Dec. (CMc); 7, Spfld, 28 Dec. (DB). LD: 3 Jan., Cherry Valley (Winnebago Co)(BG).

Northern Shoveler

Wintered in small numbers statewide. MC: 160, HL., 9 Dec. (KM). Others: 30, Carl. L., 17 Dec. (DK); 17 wintered, Kemper L. (Lake Co)(CFs); 5, Sangamon Co, 18 Dec. (DB); 28 Dec.- 1 Jan., Evanston(EW).

Gadwall

Wintered at usual sewer pond locations. MC: 2,000, CCNWR, 10 Dec. (MGe). Others: 100, Spfld, 21 Dec. (DB); 100, HL, 14 Dec. (KM); 66, Carbondale (Jackson Co), 10 Dec. (BD); 3, Lake Co, 19 Jan. (PSw); 2, LCNP, 4 Jan. (CMc).

Eurasian Wigeon

18 Feb., Moraine View SP (McLean Co)(*BPK).

American Wigeon

Wintered in small numbers. MC: 500, Mississippi R at Calhoun Co, 9 Dec. (MGe). Others: 20, Spfld, 6 Dec. (DB); 8, Wauk, 21 Dec. (PSw); 4, UCCA, 4 Jan. (KM, DK).

Canvasback

Wintered in usual numbers and places. Others: 45, Spfld, 8 Jan. (DB); 14, Carbondale (Jackson Co), 3 Jan. (BD); 8, HL., 31 Dec. (KM); 2, Wauk, 21 Dec. (PSw). Spring MC: 7,500, Mississippi R- Hancock Co, 25 Feb. (VK, DB); 300, Carl. L., 19 Feb. (DK).

Redhead

Found in usual low numbers. LD: 11 Jan. (3), Carl. L (DK); 5 Jan., Spfld (DB); 15 Dec., Winthrop Harbor (PSw).

Ring-necked Duck

Wintered in small numbers. MC: 27, UCCA, 4 Jan. (KM, DK); 9, Spfld, 31 Dec. (DB). Others: since late Aug.-into Mar. (female), Evanston (EW,IM); 15 Dec., Wauk (PSw); 11 Dec. (6), Crystal Lake (Lake Co)(RBA); 9 Dec., Durand (Winnebago Co)(BG).

Greater Scaup

Others: 10, CONWR, 22 Jan. (BD); 5, Spfld, 31 Dec. (DB); 2 pair, Carl. L, 5 Jan. (DK); female, Durand (Winnebago Co), 9 Dec. (BG).

Lesser Scaup

Wintered in good numbers. MC: 1,500+, Mississippi R-Rock Island Co, 28 Feb. (PP); 1,000, CONWR, 30 Jan. (BD); 65, LCal, 4 Jan. (WM); 60, Spfld, 8 Jan. (DB).

Harlequin Duck

24 Nov.- 27 Dec. (female), Wilmette (EW, RH, m.ob).

Oldsquaw

Good numbers away from L Michigan. MC: 10, CONWR, 7 Feb. (DKk); 7, Evanston, 3 Jan. (CFs); 2-5, Carl. L, 23 Dec.-5 Jan. (DK); 1-3, Spfld, 1 Dec.- 5 Jan. (DB); imm., 1 Dec., Winnebago Co (BG); 7-8 Dec., Wauk (PSw); 10 Jan., Chi (DJ).

Surf Scoter

3 Dec.- 6 Jan., Spfld (DB); male, IBSP, 29 Dec. (AS).

White-winged Scoter

male, IBSP, 19 Jan. (AS). EA: pair, 17-18 Feb., Spfld (DB).

Common Goldeneye

MC: 12,845, upper Mississippi R, 6 Jan. (MGe). Others: 665, CONWR, 14 Feb. (BD); 630, Spfld, 26 Dec. (DB); 500, LCNP, 4 Jan. (CMc); 350, IBSP, 19 Jan. (KM); 150, Carl. L, 1 Feb. (DK); 110, Wilmette, 11 Jan. (EW); 46, JP, 3 Jan. (PC).

Bufflehead

Others: 70, Winthrop Harbor, 15 Dec. (PSw); 14, Spfld, 26 Dec. (DB); 12, mid-Dec. thru Feb., JP (PC).

Hooded Merganser

MC: 60+, Spfld, 5 Dec. (DB); 40, HL, 10 Dec. (KM); 36, CONWR, 4 Jan. (BD); 7, Wauk, 15 Feb. (DJ); 4, LCNP, 4 Jan. (CMc). Others: 3, Crystal Lake (McHenry Co), 11 Dec. (RBA); 3, Will Co, 23 Feb. (CA); 22 Jan. (female), Rockford (BG); 22 Jan. (male), JP (KC); male wintered, LCal (JL).

Common Merganser

Good widespread numbers. MC: 11,175, upper Mississippi R, 17 Feb. (MGe); 6,500, LCNP, 4 Jan. (CMc). Others: 770, HL, 31 Jan. (KM); 500, Spfld, Jan. (DB); 300, Carl. L, 1 Feb. (DK).

Red-breasted Merganser

MC: 19, mid-Dec.-Feb., JP (PC-modest numbers); 2, Spfld, 15 Jan. (DB); HL, 14 Dec. (KM); Crystal L (McHenry Co), 11 Dec. (RBA).

Ruddy Duck

Wintered in small numbers at usual locations. MC: 19+, Carbondale (Jackson Co), 3 Jan. (BD); 3, Spfld, 1 Jan. (DB). LD: 16 Dec. (3), Winnebago Co (BG); 15 Dec., JP (PC); 1 Dec., LCNP (CMc).

Black Vulture

Wintering in traditional areas. 8, Heron Pond (Johnson Co), 20 Jan. (DK).

Turkey Vulture

LD: 21 Dec., Wheaton (RF); 21 Dec., nw. Du Page Co (*m.ob.) - same bird as first record?; 15 Dec., Carl. L (DK).

Bald Eagle

MC: 2,459 (most ever), in Jan., statewide count-Jim Herkert (IDNR). Others: 206, Mississippi R- L & D 13 & 14 (Rock Island/Whiteside Co), 19 Jan. (PP); 53, Illinois R, 12 Jan. (RC); 21, Starved Rock L & D (La Salle Co), 1 Feb. (CMc).

Northern Harrier

Scarce. MC: 20, La Salle Co, 4 Jan. (CMc); 6, Carl. L, 23 Dec. (DK); 4, De Kalb Co, 15 Feb. (DS). Others: 3, Jackson/Union Co, Jan. (BD); 2, Fulton Co, 31 Jan. (LH); 2, Glenview Naval Air Station (Cook Co), 22 Dec. (DJ); Chi, 18 Jan. (RC); Winnebago Co, 22 Jan. (BG); None in winter (DB).

Sharp-shinned Hawk

21 Dec., Will Co (CA); 11 Jan., Lake Co (PSw); 23 Jan., Sangamon Co (DB); 9 Feb., La Salle Co (CMc); 15 Feb., Carl. L (DK). Others: period (2), Kane Co (LH); period (2), Jackson Co (DKs); period (2), McHenry Co (CFs); period, Rockford (DW); period, Warren Co (LH).

Cooper's Hawk

Very good season. MC: 7 sightings/period, Rockford (DW). Others: 1 Dec. (imm), Evanston (EW); 4 Dec. (imm), JP (PC); 10 Dec. (2), Spfld (DB); 14 Dec., Bloomington (McLean Co)(MR); 21 Dec., McHenry Co (PSw); 23 Dec. (2 imm), Kane Co (LH); 22 Jan., Carl. L (DK); 31 Jan., U of I campus (Champaign Co)(RC); 1 Feb. (2), Tazewell/Mason Co (RC); 22 Feb., La Salle Co (CMc); pair wintered, McHenry Co (CFs); period, O'Fallon (St Clair Co)(KM); period (2), Jackson Co (DKk).

Northern Goshawk

3 Dec., Urbana (RC); 6 Dec. (imm), Spfld (DB); 27 Dec., Rockford (DW); 22 Jan. (imm), Rockford (BG); 23 Feb. (imm), Normal (McLean Co)(DBi).

Red-shouldered Hawk

1 Feb. (imm), Carl. L (DK); 1 Feb. (imm), Peoria (Tazewell Co)(RC); 2 Feb. (ad), Allerton Park (Piatt Co)(RC); 15 Feb. (subad), Lyons Woods (Lake Co)(DJ).

Red-tailed Hawk

Poor numbers, though various morphs reported. "Harlan's"-wintered (ad), UCCA (BD); wintered, Carl. L (DK). "Kriger's"- 21 Dec., Rockford (*DW). "Rufous" morph- 7 Jan., Cook Co (WS); 11 Jan., Rockford (*DW); 7 Feb., Lake Co (CFs). "Dark" morph- seen 3 times/period, Sangamon Co (DB).

Rough-legged Hawk

Low concentrations most everywhere. MC: 5, I-74 near Carlock (McLean Co), 19 Jan. (MR). Others: 9 Dec., McDonough Co (LH); 27-28 Dec., Glenview (EW); 1 Jan., MFWA (RC); 11 Jan. (dark phase), Carl. L (DK); 18 Jan., LCal (RC); 19 Jan. (light phase), Whiteside Co (CFs); 20 Jan., McLean Co (KM); 23 Jan. (light phase) and 29 Jan. (dark phase), Sangamon Co (DB); 25 Jan., Jackson Co (BD); 2 Feb., De Kalb Co (WS); 9 Feb., Champaign Co (RC).

Golden Eagle

Good season though no birds actually wintered; 3, UCCA, 8-24 Dec. (BD); imm., Jersey Co, 13 Dec. (JV).

American Kestrel

MC: 22, Carl. L., 23 Dec. (DK); 10, Sangamon Co, 3 Dec. (DB); 8, Jackson Co, 5 Jan. (BD).

Merlin

16 Dec. (female), Klehm Arboretum (Rockford)(JDo); 21 Dec., Pecatonica (Winnebago Co)(DW); 13 & 22 Jan. (male), Rockford (BG); early Jan., Jackson Co (SO).

Peregrine Falcon

MC: 4, Chi, 23 Feb. (JL), Others: 2 Dec. & 8 Feb., Mel Price L & D (Madison Co)(JV); 4-5 Jan. & 8 Feb., LCal (WM); 23 Jan., Rockford (RMr); wintered (2), JP (PC); wintered, Wauk/Zion (fide EW).

Gray Partridge

"Notable scarcity in Winnebago Co"- DW,

Wild Turkey

Excellent numbers, widespread. MC: 81, La Salle Co, 11 Jan. (CMc); 62, Rock Island/Whiteside Co, 19 Jan. (CFs); 17, East Alton (Madison Co), 7 Feb. (KM); 14, Jackson Co, 30 Jan. (DK).



An American Kestrel, stalking sparrows "right in my own backyard," Evanston, IL, Cook Co. 15 Jan. 1997. Photo by Kathy Ade.

Northern Bobwhite

Few reports or actually scarce? MC: 16, Sangamon Co, 2 Dec. (DB); 15, HL, 10 Dec. (KM); 12, Carl. L., 23 Dec. (DK).

American Coot

Wintered. MC: 40, HL, 10 Dec. (KM); 30, Spfld, 1 Jan. (DB); 17, Carbondale (Jackson Co), 3 Jan. (BD). LD: 1 Jan., Rock R (Rock Island/Whiteside Co)(PP); 4 Jan., LCNP (CMc); 21 Dec., Illinois R at Seneca (DS); 11 Dec. (2), Crystal Lake (McHenry Co)(RBa).

Sandhill Crane

LD: 31 Dec. (40), Vermilion Co (JS).

Killdeer

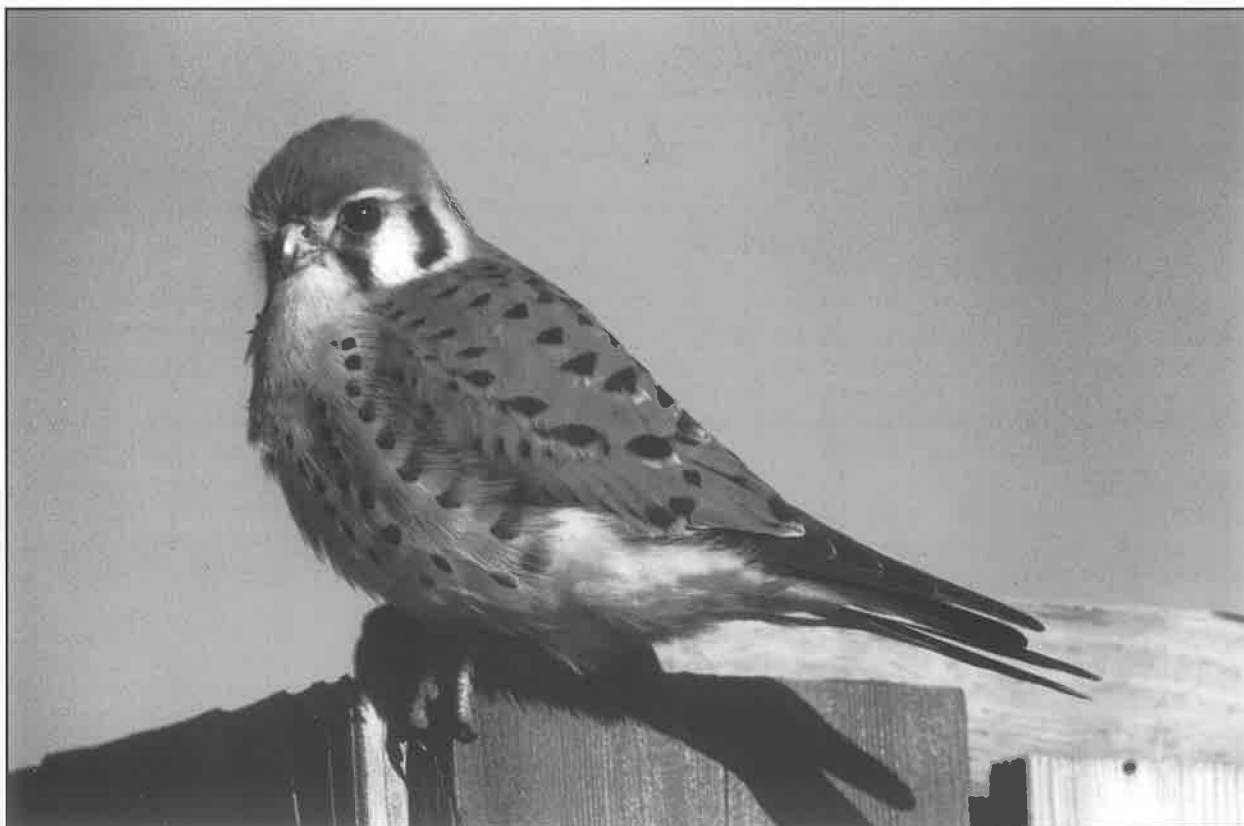
LD: 3 Jan. (2), HLCA (KM, MD); 10 Dec., Sangchris S.P.(DB).

Common Snipe

LD: 28 Dec., Glenview Naval Air Station (m.ob.); 21 Dec., Will Co(CA); 10 Dec. (2), Spfld (DB). Wintering record?: 3 Feb., Madison Co (JV).

American Woodcock

EA: 4 Jan., Saline Co (JD); 17 Feb., Sauget (St Clair Co)(KM); 21 Feb., Sangchris S.P. (DB).



American Kestrel, Springfield IL, Sangamon Co, 6 Jan. 1997. Photo by Dennis Oehmke.

Pomarine Jaeger

23 Nov.-15 Dec. (imm), Mel Price L & D (Madison Co)(JV, DK et al).

Bonaparte's Gull

Did not winter, MC/LD: 50, Spfld, 8 Jan. (DB); 35, CONWR, 3 Jan. (BD); 17, Wilmette, 8 Dec. (JL).

Ring-billed Gull

MC: 10,000, Hancock Co, 25 Feb. (VK, DB); 1,500, LCNP, 1 Dec. (CMc); 1,500, Spfld, 17 Dec. (DB). {Ring-billed/Herring Gull} MC: 20-30,000, Mel Price L & D (Madison Co), early Feb. (JV, et al)

Herring Gull

MC: 5-10,000, Mel Price L & D, Jan. (WR); 3,000, LCNP, 21 Dec. (CMc); 3,000, LCal, 12 Jan. (WM); 200, Hancock Co, 25 Feb. (VK, DB); 150, Spfld, 31 Jan. (DB).

Thayer's Gull

Very good season. MC: 5 wintered, Mel Price L & D (Madison Co)(JV); 3, LCal, 18 Jan. (RC); 3, Chi, 10-11 Jan. (EW, JE). Others: 2 (3rd, ad), LCal, 8 Feb. (WM); 2 ad, Mallard Lake FP (Du Page Co), 30 Dec. (MM); 2 (1st's), Carl. L., 19 Dec. (DK); ad, Camp Logan (Lake Co), 8 Dec. (PSw); 1st winter, Cook Co, 22 Dec. (LH); 1st, Spfld, 1 Jan. (DB); ad, Carl. L., 13 Feb. (DK); 2nd winter, LCNP, 23 Feb. (CMc).

Iceland Gull

Great season downstate. All adults in Illinois assumed to be 'Kumlien's' unless documented otherwise. MC: 4 wintered (mostly 1st, 2nd winter with ad, 8 Feb.), Mel Price L & D (Madison Co)(JV). Others: 8 Jan. (ad), Spfld (DB); 12 Jan. (ad), LCal (WM); 18 Jan. (ad), LCal (RC); 26 Jan. (1st), Peoria L & D (Tazewell Co)(RC); 13 Feb. (1st), Carl. L (DK).

Lesser Black-backed Gull

Good numbers of mostly adults. MC: 2 ad wintered, Mel Price L & D (Madison Co)(JV); 2 ad, Carl. L., 17 Dec. & 13 Feb. (DK); ad (wintered) & 1st (14-19 Feb.), Spfld (DB). Others: 21 Dec., Kane Co (MM); 28 Dec. (ad), Wilmette (EW, IM); 30 Dec. (ad), Peoria L & D (LH); 18 Jan. (ad), LCal (RC); 22 Feb. (ad), Clin. L (RC); 27 Feb. (ad), Wauk (PSw).

GLAUCOUS-WINGED GULL

26 Jan. & 1 Feb. (1st winter), Peoria L & D (Tazewell Co)(*RC, m.ob.); 6 Feb.,+ (1st winter), Mel Price L & D (Madison Co)(*JV, *DK, *JZ).



Snowy Owl, Montrose Harbor, Chicago. 16 Feb. 1997. Photo by Robert Hughes.



Snowy Owl, Montrose Harbor, Chicago. 12 Dec. 1996. Photo by Craig Thayer.

Glaucous Gull

MC: 3 wintered, Mel Price L & D (Madison Co)(JV); 3, LCal, 31 Jan. (JL); 2, LCal, 18 Jan. (RC); 2 (1st & ad), Peoria L & D, 26 Jan. (RC); 2 (2nd & ad), LCNP, 23 Feb. (CMc). Others: 21 Dec. (1st), LCNP (CMc); 21 Dec., Kane Co (MM); 30 Dec. (1st), Peoria L & D (LH); 30 Dec., Mallard Lake FP (Du Page Co)(MM); 1 Feb. (1st), LChau (RC).

Great Black-backed Gull

Great season. MC: 2 wintered, Mel Price L & D (Madison Co)(JV); 2 (1st winter), Spfld, 10 Jan. & 19 Feb. (DB). Others: 22 Dec., Winnetka (Cook Co)(LH); 30 Dec., Mallard Lake FP (Du Page Co)(MM); 1-3 Jan. (ad), Evanston/Wilmette (EW, m.ob.); 18 Jan. (2nd), Evanston (RC); 12-15 Feb. (1st), Carl. L (DK, KM).

Black-legged Kittiwake

4 Jan. (imm), LCNP (ph-CMc).

BAND-TAILED PIGEON

1st state record, 22 Dec.-23 Jan. (ad), Spfld (*DB, m.ob., ph). See separate story for details.

Mourning Dove

MC: 307, Univ. of Chi, 1 Feb. (GD); 136, Dundee (Kane Co), 23 Dec. (LH); 115, Rend L., 21 Dec. (KM, FB); 75, Sangamon Co, 8 Dec. (DB).

Eastern Screech-Owl

"Numbers declining?"-DB (only 2 during period-Sangamon Co), MC: 7, Lake Co, 1 Jan. (DJ); 4, Carl. L., 22 Dec. (DK et al).

Great Horned Owl

MC: 5, Sangamon Co, 22 Dec. (DB). Other: 11 Dec., Evanston (EW); 13 Dec., Chi (Lincoln Park Bird Sanctuary) (EW).

Snowy Owl

Invasion year. 33+ records in the metropolitan area of Chi (DJ). MC: 5, Chi (Montrose Harbor), 22 Dec. (DJ, m.ob.). Others: 2, LCNP, 21 Dec. (CMc); Carl. L., 14-30 Dec. (FSp); 27-28 Dec., Wilmette (EW, m.ob.); 2-4 present daily on Chi lakefront (m.ob.).

Barred Owl

No significant reports other than 10 Feb., Orland Park (Cook Co)(WS).

Long-eared Owl

Very few sightings. MC: 3, Rend L, 21 Dec. (DK). Others: 31 Dec.- 1 Jan., Middlefork FWA (RC); 5 Jan.- mid-Feb., Lyons Woods (Lake Co)(AS); 1-22 Feb., Clinton Co (JV).

Short-eared Owl

No large concentrations. MC: 4, Durand (Winnebago Co), 21 Dec.- 15 Feb. (BG, DW). Others: 3, Bloomington (McLean Co), mid Dec. (MFr); 2, De Kalb Co, 19 Jan. (DS); 2 Dec.- 30 Jan., Glenview (Cook Co)(EW); 21 Dec., La Salle Co (CMc); 23 Dec., Carl. L (DK); 7 Jan., Peabody Strip Mine (St Clair Co)(DK); 31 Jan., HL (KM).

BOREAL OWL

1st record since 1914; 9 Feb., Rockford (Mdy,*BG,*RMs). See separate story for details.

Northern Saw-whet Owl

1 Jan., Kickapoo SP (Vermilion Co)(RC); 5 Jan., Van Patten Woods (Lake Co)(AS); 2 Feb., Allerton Park (Piatt Co)(RC).

Belted Kingfisher

Wintered in southern locations. Other records: 7 Dec., Skokie Lagoons F.P. (Cook Co)(JMd); 14 Dec., LCal (JL); 22 Dec., JP (KC); 7 Jan., Bushnell (McDonough Co)(LH); 4, Spfld, 11 Jan. (DB); 2, Starved Rock L & D, 1 Feb. (CMc).

Red-headed Woodpecker

Records away from southern Illinois strongholds. MC: 16, Carl. L, 23 Dec. (DK); 4, Spfld, 12 Dec. (DB); 4 wintered, Homer (Vermilion Co)(JS).

Red-bellied Woodpecker

MC: 34, Carl. L, 23 Dec. (DK); 11, Spfld, 22 Dec. (DB); 9, Cap Sauers FP (Cook Co), 22 Dec. (PSw); 2 wintered, Homer (Vermilion Co)(JS). Other: wintered, Chi (Lincoln Park Bird Sanctuary) (KH,EW,JL-unusual record for lakefront).

Yellow-bellied Sapsucker

Few reports. MC: 3, Spfld, 19 Dec. (DB). Others: 22 Dec., De Kalb Co (DS); 1 Jan., Rockford (DW, BG); 25 Jan., Ryerson Nature Area (Lake Co)(SH); 1 Feb., Pomona (Jackson Co)(KM).

Downy Woodpecker

MC: 35, Carl. L, 23 Dec. (DK); 20, I & M canal (La Salle Co), 21 Dec. (DS); 18, Cap Sauers FP (Cook Co), 22 Dec. (PSw); 5-6 pairs wintered, JP (PC); 10, Spfld, 22 Dec. (DB).

Hairy Woodpecker

Few reports. MC: 8, Carl. L, 23 Dec. (DK); 3, Spfld, 23 Jan. (DB). Other: 18 Jan., Chi (Lincoln Park Bird Sanctuary) (JL).

Northern Flicker

MC: 20, HLCA, 3 Jan. (KM, MD); 10, Spfld, 12 Dec. (DB), LD: 19 Jan., La Salle Co (DS).

Pileated Woodpecker

MC: 3, Spfld, 2 Dec. (DB); 3, Oakwood Bottoms (Jackson Co), 23 Jan. (KM).

Eastern Phoebe

LD: 19 Dec., Spfld (DB); 2 Dec., Lincolnwood (Cook Co)(RE).

Horned Lark

MC: 1,385, Sangamon Co, 9 Jan. (DB). Others: 90, La Salle Co, 1 Dec. (CMc); 88, Pike Co, 29 Jan. (KM); 61, Carl. L, 22 Dec. (DK); 50, Fulton/Cordova (mostly Whiteside Co), 19 Jan. (JMd); 35, Killdeer (Lake Co) 12 Jan. (CFs); 24, Volo (Lake Co), 16 Feb. (JL).

Blue Jay

MC: 103, Carl. L, 22 Dec. (DK et al); 38, Sangamon Co, 22 Dec. (DB); 35, Rend L, 21 Dec. (KM, FB); 22, I & M canal (La Salle Co), 21 Dec. (DS).

CLARK'S NUTCRACKER

2nd state record/specimen: 27 Dec.- 13 Jan., Carthage (Hancock Co)(**BGr). See seasonal highlights for details.

American Crow

MC: 148,000, Danville, 1 Jan. (m. ob.). Others: 1,100 (peak of roost), Evanston, 18 Feb. (EW); 900, HL, 14 Dec. (KM); 600, Spfld, 26 Dec. (DB); 191, JP, 10 Dec. (KC).

Black-capped Chickadee

MC: 77, Cap Sauers FP (Cook Co), 22 Dec. (PSw). Others: 24, Sangamon Co, 22 Dec. (DB); 16-18, JP, wintered (PC).

Carolina Chickadee

MC: 94, Carl. L, 22 Dec. (DK et al).

Tufted Titmouse

MC: 60, Carl. L, 22 Dec. (DK et al); 22, Rend L, 21 Dec. (KM, FB); 14, Sangamon Co, 22 Dec. (DB). Other: 2, Cordova (Rock Island Co), 19 Jan. (JMd).

Red-breasted Nuthatch

Very scarce. MC: 4, Winnebago Co, 21 Dec. (DW). Others: 16 Dec.-30 Jan., Bushnell (McDonough Co)(LH); 4 Jan., UCCA (SJn, RC); 1-4 Feb., Carl. L (DK, JV); 8-15 Feb. (1-2 birds), Lyons Woods (Lake Co)(PSw).

White-breasted Nuthatch

MC: 19, Carl. L, 22 Dec. (DK et al); 7, Sangamon Co, 4 Dec. (DB).

Brown Creeper

Good numbers. MC: 14, I & M canal (La Salle Co), 29 Dec. (DS); 13, Carl. L, 22 Dec. (DK et al); 6, Sangamon Co, 1 Jan. (DB); 5, Cap Sauers FP (Cook Co), 22 Dec. (PSw); 2 win



Short-eared Owl, Glenview Naval Air Station, Cook Co. Two Short-eared Owls wintered here. Photo taken in December 1996 by Eric Walters.

tered, JP (PC); wintered Bushnell (McDonough Co)(LH).

Carolina Wren

MC: 20, Carl. L., 22 Dec. (DK et al); 9, Spfld. 13 Dec. (DB). Other: I & M canal (Grundy Co), 29 Dec. (DS); 28 Dec. (2), Highland Park (file EW).

House Wren

LD: 20 Dec., Clin. L. (*RC,*SB); mid Dec.-early Jan., Spfld (DB).

Winter Wren

MC: 3, Spfld. Dec. (DB); 3. HLCA, 3 Jan. (KM, MD); 21 Dec., Wheaton (EW,RF).

Marsh Wren

LD: 21 Dec., Rockford (DW).

Golden-crowned Kinglet

MC: 20, Carl. L., 22 Dec. (DK et al). Others: 3, Cap Sauers FP (Cook Co), 22 Dec. (PSw); 2, Gurnee (Lake Co), 1 Jan. (DJ); 14 Jan., Sangamon Co (DB); 23 Jan., Peatonica (Winnebago Co)(BG).

Ruby-crowned Kinglet

MC: 2, HLCA, 3 Jan. (KM, MD). LD: 1 Jan., Spfld (DB).



Townsend's Solitaire, Rockford, IL. 7 Jan. 1997. Photo by Dennis Oehmke.

Eastern Bluebird

MC: 8, Rend L., 21 Dec. (KM, FB); 5, Sangechris S.P., 1 Dec. (DB); 3, Putnam Co, 5 Jan. (CMe). LD: 2 Dec. (3), Woodstock (McHenry Co)(RBA).

TOWNSEND'S SOLITAIRE

Klehm Arboretum (Rockford), 28 Dec.-3 March (DW,m.ob.).

Hermit Thrush

MC: 3, Alexander Co, 3 Jan. (RC). Others: 17 Dec., JP (KC); Klehm Arboretum (Rockford), 18 Jan.-24 Feb. (BG).

American Robin

Wintered in small numbers. MC: 16, Spfld, 17 Dec. (DB); 12, De Kalb Co, 22 Dec. (DS); 8 wintered (1 was an albino), Klehm Arboretum (Rockford)(BG); 5, Rend L., 21 Dec. (KM, FB). LD: 5 Jan. (2), JP (PC).

Varied Thrush

8 Dec.-22 Mar., Wauk (CE,m.

ob.,ph.) - at a feeder. See seasonal highlights for details.

Northern Mockingbird

Wintered in fair numbers.



Northern Mockingbird, Springfield, Sangamon Col. 12 Jan. 1997. Photo by Dennis Oehmke.

Brown Thrasher

Few reports, wintered at feeder in Bloomington (McLean Co)(MFr).

American Pipit

23, HLCA, 3 Jan. (KM, MD et al).

Cedar Waxwing

MC: 200, Klehm Arboretum (Rockford), 10 Feb. (BG); 108, CBG, 31 Jan. (CFs); 40, Dundee (Kane Co), 23 Dec. (LH); 18, Spfld, 20 Jan. (DB); 15, Rend L, 21 Dec. (KM, FB). Others: 16 Dec., Clin. L (KM).

Northern Shrike

Good season. 21 Dec., Will Co (CA); 21 Dec., Rockford (DW); 23 Dec., Kane Co (LH); 3 Jan., Rock Cut SP (Winnebago Co)(BG); 5 Jan., Lake Co (SH); 27 Dec-19 Jan., Glenview (EW); 31 Jan., McHenry Co (RBa).

Loggerhead Shrike

MC: 5, Carl. L, 22 Dec. (DK et al). Others: 2 Jan., McDonough Co (LH); 2 during period, Sangamon Co (DB).

European Starling

MC: 281, JP, 1 Jan. (PC).

White-eyed Vireo

LD: 11 Dec., Spfld (DB).

Orange-crowned Warbler

LD: 1 Jan., Spfld (DB).

Yellow-rumped Warbler

MC: 6, UCCA, 4 Jan. (KM, MD). Others: 2, Will Co, 21 Dec. (CA); 2, Middlefork FWA, 1 Jan. (RC); 2, Winnebago Co, 18 Jan. (BG); 21 Dec., Wheaton (EW,RF); 1 Jan., Spfld (DB).

Northern Cardinal

MC: 233, Carl. L, 22 Dec. (DK et al); 58, Rend L, 21 Dec. (KM, FB); 52, Spfld, 22 Dec. (DB); 14 wintered, JP (PC).

Indigo Bunting

14 Dec. (female) & 23 Dec. (different female) & 1 Feb. (male), Carl. L (DK- found in sunflower fields); 3 Jan. (female), HLCA (DK).

Eastern Towhee

3 records in Dec., Spfld (DB); 20 Dec. (male) & 21 Dec. (female), Rockford (DW- feeder attendees).

Spotted Towhee

1 Dec.-19 Jan.+ (female), Max McGraw Wildlife Center (Kane Co) (RM,m.ob.,ph.).

American Tree Sparrow

MC: 240, Sangamon Co, 12 Jan. (DB); 182, LCNP, 4 Jan. (CMc); 106, Carl. L, 22 Dec. (DK et al), 42, Rend L, 21 Dec. (KM, FB).

CLAY-COLORED SPARROW

23 Nov-18 Jan., Chi (Lakeshore Park) (DJ,RH,EW,ph.). 2nd Illinois winter record. See seasonal highlights for details.

BREWER'S SPARROW

24 Nov-into spring, Chi (Lincoln Park Bird Sanctuary (RH,LM,m.ob.,ph.)). 3rd state record/1st winter record. See seasonal highlights for details.

Field Sparrow

MC: 9, Carl. L, 22 Dec. (DK et al). Others: 3, Sangamon Co, 12 Dec. (DB); 3 Jan., HLCA (KM, MD).

Savannah Sparrow

Few reports. 1 Dec. (2), LCNP (CMc); 8 Dec., JP (AS); 25 Jan., Chi (Montrose Harbor) (RBa, JG); 29 Jan., Jersey Co (KM).

Fox Sparrow

3 Dec., Woodstock (McHenry Co)(RBa); 21 Dec., Rend L (KM, FB); 21 Dec., Rockford (DW); 28 Dec., Techny (m.ob.); 9 Jan., Sanghehris S.P. (DB); 22 Jan., Carl. L (DK).

Song Sparrow

MC: 96, Carl. L, 22 Dec. (DK et al). Others: 37, Rend L, 21 Dec. (KM, FB); 16, Sangamon Co, 27 Dec. (DB); 8, Kane Co, 23 Dec. (LH).

Swamp Sparrow

MC: 22, Techny, 28 Dec. (m.ob.); 20, Rend L, 21 Dec. (KM, FB); 16, Carl. L, 22 Dec. (DK et al); 6, L Cal, 20 Jan. (JL). Others: 2 Jan., JP (PC); 23 Jan. (2), Sangamon Co (DB).

White-throated Sparrow

MC: 44, Chi (Lakeshore Park), 22 Dec. (DJ); 35, Rend L, 21 Dec. (KM, FB); 19, Carl. L, 22 Dec. (DK et al); 17, Sangamon Co, 10 Dec. (DB); 15 wintered, Klehm Arboretum (BG). LD: 13 Dec., JP (PC).

White-crowned Sparrow

Low numbers this season. MC: 11, Dundee (Kane Co), 23 Dec. (LH); 7, Techny, 28 Dec. (m.ob.); 4, Winnebago Co, 21 Dec. (DW); 4, UCCA, 4 Jan. (KM, DK); 3, Carl. L, 22 Dec. (DK et al); 3, Glenview, 10 Jan. (EW); 2, Spfld, 12 Jan. (DB).

Dark-eyed Junco

MC: 271, Carl. L, 22 Dec. (DK et al); 225, Sangamon Co, 12 Jan. (DB); 85, Sand Ridge SF (Mason Co), 20 Jan. (KM); 14, JP, 23 Jan. (PC). "Oregon" form- 10 Dec. & 5 Jan., Sangamon Co (DB); 21 Dec., Rockford (DW).

Lapland Longspur

Widespread in good numbers. MC: 3,000, Piatt Co, 8 Dec. (RC); 100-1,500, Bond Co, Dec.-Jan. (JV, DK); ~600, Colfax (McLean Co), 12-17 Jan. (MR); 400, Sangamon Co, 8 Dec. (DB); 150+, Volo (Lake Co), 15 Feb. (SH); 100+, Winnebago Co, 10 Jan. (DW); 75, Wauk, 7 Dec. (DB,MD,VK); 75, Kane Co, 9 Jan. (DS); ~40, McHenry Co, 26 Jan. (RBa); 25, UCCA, 4 Jan. (KM, DK); 19, LCNP, 1 Dec. (CMc).

Snow Bunting

"Easy to find this year because of snow cover"-DS. MC: 350+, Volo (Lake Co), 15 Feb. (SH); 250, De Kalb Co, 19 Jan. (DB, MD, VK); 250, LaSalle Co, 16 Feb. (DS); 100, McHenry Co, 16 Feb. (PSw); ~70, McHenry Co, 11 Jan. (RBa); 27, IBSP, 7 Dec. (AS). Others: 17, Volo (Lake Co), 16 Feb. (JL); 17, LCNP, 7 Dec. (CMc); 6, Winnebago, 10 Dec. (DW); 4, JP, 15 Dec. (PC); 2-3, Colfax (McLean Co), 29 Dec. (MR); 25 Jan., Evanston (EW); 2 Feb., Monticello (Piatt Co)(RC).

Red-winged Blackbird

MC: 500, Sangamon Co, 5 Jan. (DB); 400, Carl. L, 22 Dec. (DK et al); 300, Ottawa (La Salle Co), 19 Jan. (JMd); 230, Will Co, 21 Dec. (CA).



Spotted Towhee, female, Max McGraw Wildlife Foundation, Kane Co. 4 Dec. 1996. Photo by Joe B. Milosevich.

Eastern Meadowlark

MC: 16, Rend L., 21 Dec. (KM, FB); 6, Kane Co., 10 Jan. (LH); 4, Carl. L., 22 Dec. (DK et al); 3, Sangamon Co., Jan. (DB); 2, Glenview Naval Air Station, 28 Dec. (EW); 8 Dec., Clin. L. (RC).

Yellow-headed Blackbird

21 Dec., Rend L. (BD).

Rusty Blackbird

MC: 400+, HLCA, 3 Jan. (KM, MD). Others: 7, Belleville (St Clair Co), 26 Jan. (ASp); 2, Sangamon Co., Jan. (DB); 9 Dec., Durand (Winnebago Co)(BG).

Common Grackle

LD: 19 Jan. (2), Zion (Lake Co)(PSw); 19 Jan., LCNP(CMc); 9 Jan., Spfld (DB).

Brown-headed Cowbird

MC: 450, Spfld, 5 Jan. (DB); 250+, O'Fallon (St Clair Co), 26 Jan. (KM); 59, Homer (Vermilion Co), 10 Jan. (JS). LD: 19 Jan. (2), Zion (Lake Co)(PSw); 4 Jan. (6), McDonough Co (LH).

Purple Finch

Low numbers again, but better than last year. MC: 5, Winnebago Co, 2 Dec. (BG); 3, Spfld, 12 Dec. (DB). Others: 6 Dec., Homer (Vermilion Co)(JS); 19 Dec., Carl. L. (DK); 22 Dec., Will Co (CA); 28 Dec., Rockford (DW).

House Finch

MC: 525, Carl. L., 22 Dec. (DK et al); 121, Palatine (Cook Co), 27 Feb. (CFs); 80, CBG, 28 Dec. (m.ob.); 64, Spfld, 10 Jan. (DB).

Red Crossbill

MC: 4, IBSP, 8 Feb. (AS); 4, Lyons Woods FP (Lake Co), 15 Feb. (PSw) - same birds as above record?. Others: 2, Allerton Park (Piatt Co), 2 Feb. (RC); 16 Dec., Spfld (DB); 21 Dec., Shirland (Winnebago Co)(DW).

Pine Siskin

Very scarce, perhaps worst winter in recent memory: 21 Dec., Cherry Valley (Winnebago Co)(DW); 1 Jan. (2), Whiteside Co (PP).

American Goldfinch

MC: 1,370, Carl. L., 22 Dec. (DK et al); 585, Jackson Co, 26 Jan. (BD); 44, JP, 5 Jan. (PC); 22, Spfld, 12 Dec. (DB).

Evening Grosbeak

Almost totally absent; early Jan., Jackson Co (LW).

House Sparrow

MC: 310, Homer (Vermilion Co), 27 Nov (JS); 58, JP, 1 Dec. (PC).

Eurasian Tree Sparrow

MC: 91, Mercer Co, 27 Dec. (PP); 53, Spfld, 25 Dec. (DB).

— Robert Danley
2201 Clay St.
Murphysboro, IL 62966

The Illinois Ornithological Society gratefully acknowledges the following supporters and contributors for their generous donations and support.

Supporters (\$100 - \$500)

- Mrs. Clayton H. Banzhaf • Denis M. Bohm •
- Decatur Audubon Society • Dinah Dyer & Herb Wisch •
- Parker Hall • David B. Johnson •
- R. David Johnson • Steven Mlodinow •
- Wilbur & Baiba Rosenkranz •
- Paul F. Sullivan & Marsha Dittmer •
- Lynne N. Tamura •
- David Willard •
- Anonymous •

Contributors (\$50 - \$99)

- Mr. & Mrs. Rex J. Bates • David Brenner • Florence Burek •
- Elizabeth L. Chato • Paul R. Clyne • Evanston North Shore Bird Club •
- Mrs. Erica Friederici • J. Patrick Graham •
- Philip Haebler/The Upstart Crow • Mary Ann Harrison •
- Craig Jobson • R. Laegeler • Marjorie Lundy & Family •
- Martha Marks • Alex and Marilyn Meloy •
- Kristin & Roger Miller • P. Clifford Miller • Kay Morgan •
- North Central Illinois Ornithological Society •
- Sebastian T. Patti • Karen Rodemaker • Harriet W. Rylaarsdam •
- Roger and Dana Rzepka • Mark Seiffert • Joe Suchecki •
- John & Caryl Sweeney • Robert Whelan Family •
- Jack & Betty Wier/Wildlife Rescue and Rehabilitation •
- The World Cafe/Vernon and Linda La Via •

ABOUT OUR ADS AND AD RATES.....The Illinois Ornithological Society accepts pertinent ads for publishing in *Meadowlark*. The rates and rules are as follows:

Required materials: Camera-ready copy and check payable to IOS should be sent to: Sheryl De Vore, 967 Braeburn Road, Mundelein, IL 60060.

Due dates: No. 1 - Summer: February 1; No. 2 - Fall: May 1; No. 3 - Winter: August 1; No. 4 -Spring: November 1

Rates PER ISSUE: \$15 one-eighth page or equivalent of one business size card; \$30 one quarter page or equivalent of two business size cards; \$60 half page.

We reserve the right to accept or deny any ad, and to limit the space set aside for ads, which will be placed at the back of the journal.

Springhouse begins where the travel brochures leave off.

Read about the real Southern Illinois: History, folklore, humor, recipes, and letters—always plenty of letters.

One-year subscription (6 issues) \$15.00

Springhouse

P.O. Box 61 • Herod, IL 62947
Tel. No. (618) 252-3341

**BINOCULARS REPAIRED
CUSTOM SALES**

The right binocular at the right price

Herb Koehler - Owner
Binocular Technician 44 years
Estimates: No Cost or Obligation



TELE-OPTICS
5514 Lawrence Avenue
Chicago, IL 60630
(312) 283-7757

SUBMISSION INFORMATION

✔ We welcome manuscripts, photographs, and illustrations for possible publication in *Meadowlark*.

✔ Article topics include unusual bird sightings and nesting accounts, technical papers on bird research, and other articles such as bird finding guides and field identification tips. Joy of birding articles will be considered.

✔ Manuscripts should be typewritten or computer-generated, double spaced and on only one side of numbered pages. Please send two copies of your manuscript and make sure you keep another for yourself.

✔ If you are able, submit a computer disc in ascii file or for Word Perfect 5.1.

✔ We prefer clear black and white or color print photographs. Color slides may also be acceptable.

✔ Include name, address, and day and night time phone numbers. Other pertinent information about your qualifications and background is also helpful.

✔ We reserve the right to review and edit articles according to style, grammar, accuracy, and readability.

✍ Send articles, photographs, and inquiries to:

Sheryl De Vore, Chief Editor
967 Braeburn, Mundelein, IL 60060.

✍ Pen and ink drawings are also accepted

Contact:

Denis Kania, 1536 Preston Road
Naperville, IL 60563.

SEND SEASONAL REPORTS TO:

Fall Migration - Due 7 December
(1 August - 30 November)

• Robert Chapel
306 1/2 West California, Urbana, IL 61801

Winter Season - Due 7 March
(1 December - 28 February)

• Robert Danley
2201 Clay Street, Murphysboro, IL 62966

Spring Migration - Due 7 June
(1 March - 31 May)

• Paul R. Clyne
5538 S. Blackstone Ave., Chicago, IL 60637

Breeding Season - Due 7 August
(1 June - 31 July)

• Vernon Kleen
Illinois Department of Conservation
Natural Heritage Division
524 S. Second St., Springfield, IL 62701

SUBSCRIPTION INFORMATION

Members of the Illinois Ornithological Society receive *Meadowlark*, the quarterly journal, plus *Wings Over The Prairie*, the IOS newsletter. Members are also invited to special field trips, the annual meeting, and other IOS functions.

To join or send a gift subscription, send your name or that of the gift recipient, address, and telephone number along with fee to:

IOS: P.O. Box 1971
Evanston, IL 60204-1971.

Fees: Individual \$20; Family \$30;
Full-time student \$10; Contributor \$50 - \$99;
Supporter \$100 - \$499; Sponsor \$500.

Back issues of Volume 2, 3, 4, and 5 are still available for \$5 each. Some back issues of Volume 1 are also available at \$6 each.

NATURE'S CORNER • 847-369-3636

WILD BIRD PRODUCTS

Almost 100 kinds of BIRD FEEDERS • More than 40 kinds of WILDLIFE FOOD
Birdbaths, heaters, poles, houses, books, fieldguides, binos, scopes, packs and more

NATURE'S GIFTS

Art and limited edition prints, porcelains, musicals, mugs, tee and sweat shirts, stone critters, gardening and nature books, toys, puppets, puzzles, minerals, wind chimes, jewelry, cards, calendars, audio and video tapes.

WATER GARDENING SUPPLIES

Pond kits, liners, pumps, filters, fountains, water test kits and pond care products.

10-8 WEEKDAYS, 10-6 SAT., 1-5 SUN. • 566 S. RT. 59 NAPERVILLE, IL
ACROSS FROM THE FOX VALLEY MALL NEAR VENTURE



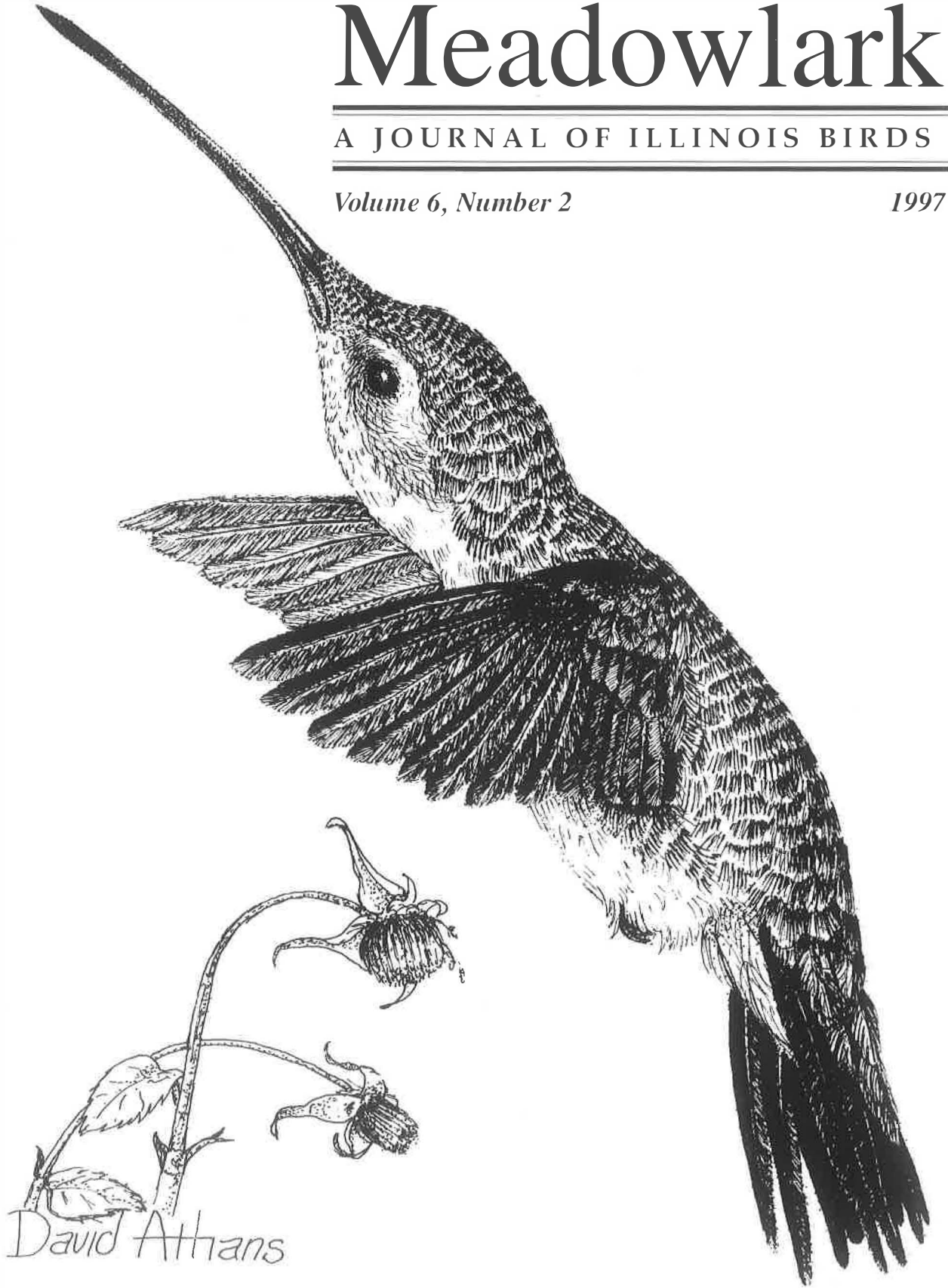
A Brewer's Sparrow wintered at the Lincoln Park Bird Sanctuary, affording many birders good views until it left sometime in early May. This photo was taken 27 Nov. 1996 by Joe B. Milosevich.

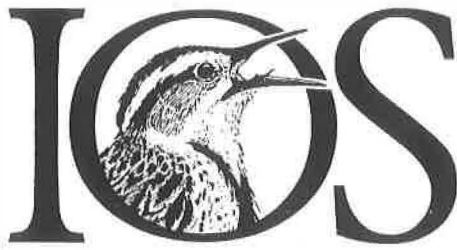
Meadowlark

A JOURNAL OF ILLINOIS BIRDS

Volume 6, Number 2

1997





Illinois Ornithological Society

Publisher

Illinois Ornithological Society
Robert Montgomery, President
Sheryl De Vore, Chief Editor
Renee Baade, Vice-President
Michael Hogg, Treasurer

Board of Directors

Renee Baade
Steve Bailey
Mary Hennen
Michael Hogg
David B. Johnson
Robert Montgomery
Joe Suchecki
Eric Walters
Geoff Williamson

Recording Secretary

Denis Bohm

Associate Editors

David B. Johnson
Peter Lowther
Christine Williamson

Art Editor

Denis Kania

Staff Photographers

Joe B. Milosevich, Dennis Oehmke

Staff Illustrators

David Athans, Brian K. Willis

Pre-Press Production

Kathy Ade

Printing

CityWide Printing
DesPlaines, Illinois

Membership Secretary

Joan Palinscar

Editorial Advisory Board

Laurence C. Binford
Dale Birkenholz
H. David Bohlen
Kenneth J. Brock, Victoria Byre
Robert T. Chapel
Mary Hennen, Scott Hickman
L. Barrie Hunt
Vernon M. Kleen
Scott K. Robinson
W. Douglas Robinson
Robert Szafoni, David Willard

Letter from the editor

We need your breeding bird survey reports!

Sometime in August or September, I begin my yearly ritual of writing a breeding bird survey report. I've been doing these surveys as a consultant for about five years for the Lake County Forest Preserve District. And while it's a tedious task, I feel a sense of accomplishment that I am recording data that could be useful to not only the forest preserve district, but also future ornithologists.

I know that many of you out there are doing the same.

For instance, our photographer Joe Milosevich has told me about surveys he did last year in the Joliet area. And our associate editor David B. Johnson has done some breeding bird survey work for the Wetlands Research Institute in Lake County. He found breeding Yellow-billed and Black-billed Cuckoos!

Why am I mentioning all this? Because these reports, while kept in files with the organization or company that scheduled the study, should also be published in *Meadowlark*.

We need to document in written format the breeding successes of birds in Illinois as a framework for future research and a link to past research. If you've already done all the transect work and report-writing for breeding birds in an area in Illinois, then you have a framework in which to write an article for *Meadowlark*. Perhaps all we need to do is make some minor changes before publishing your report.

Think of someone doing research ten years from now on the area you surveyed. What a benefit it would be if they could read your report in *Meadowlark* for comparison purposes. One thing I'd like to do is examine the breeding bird survey reports from the Lake County Forest Preserve District files for the past ten years. I did that when I surveyed Ryerson Woods two years ago and found that Veeries were considered common breeders there ten years ago. But I only found three breeding pairs in the entire preserve the year I did the survey. This is significant information.

I started the ball rolling by publishing that Ryerson report in Vol. 5 No. 2. Now is your chance to add to the breeding bird data you've been carefully collecting in your neck of the woods.

The readers surveys you returned indicated you want more information about birds in Illinois. Here's your chance to provide that information. Share your reports with us - and with the future scientists who will find them more easily in *Meadowlark* through our annual Index, than by wading through reams of files at various organizations and corporations statewide.

If you want help getting started, please contact me at (847) 566-4846; 967 Braeburn Road, Mundelein, IL 60060, or E-mail me at: sdevore@ais.net.

Sheryl De Vore

MEADOWLARK

A Journal of Illinois Birds

Volume 6, Number 2 - 1997

ISSN 1065-2043

President's Message

If you were unable to attend our annual meeting in April, you missed a fine time. Though the birding was slow considering the cold spring we had, we still enjoyed some excellent presentations and wonderful walks through woods, wetlands, and grasslands. The Upland Sandpipers and Henslow's Sparrows were just returning, and the wildflowers were blooming profusely. We also enjoyed seeing old friends and making new ones.

As we enter our sixth year, I look forward to working with our new board and you, our members. I must thank our retiring directors, Richard Blewett, Judy DeNeal, and Jean Lesniak.

These individuals made major contributions to IOS and will be missed.

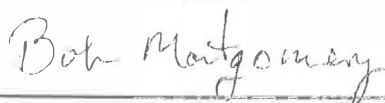
Elected to replace these hard-working directors are Mary Hennen, Steve Bailey, and Geoffrey Williamson. Mary, as you know, works with Peregrine Falcons and Eastern Bluebirds at the Chicago Academy of Sciences. Steve lives in Champaign and is a researcher with the Illinois Natural History Survey. Geoff is an active field trip leader and co-editor of the Chicago Ornithological Society's newsletter. Also joining the board is Joe Suchecki, who filled a vacancy. Joe is an active member of the DuPage Birding Club.

We are happy to have them on board.

IOS now has more than 700 members. Your board needs your help. Let us hear from you - what you like and what you don't like. Volunteer your time and talent. And mark the weekend of 19-21 June 1998 on your calendar for our next annual meeting at Starved Rock State Park near Utica.

I look forward to seeing you all there or on one of our field trips.

Until next time,



Articles

- Broad-billed Hummingbird:** 42
An Unlikely New Addition to the Illinois List

—H. David Bohlen

- WOW! What a Day!** 45

One of Illinois' best birders adds three new state species to his list in a single day!

—Vernon M. Kleen

- Illinois Hosts of the Brown-headed Cowbird** 47

— Peter E. Lowther

Avian Counterpoint

- Comments on the Parentage of a Hybrid Goose** 58

— R.A. Montgomery

- Reply to Montgomery** 60

— Nancy Bent

Departments

- Seasonal Highlights/Fall Migration 1996** 62

- Field Notes/Fall Migration 1996** 66

—Robert Chapel

About Our Cover:

The Broad-billed Hummingbird was added as a new species to the Illinois list. An article begins on page 42. Cover drawing by staff illustrator David Athans.

Copyright© by the Illinois Ornithological Society. No part of this journal may be reproduced without the written permission of IOS and the chief editor, except brief passages of a paragraph or less in which attribution is made to the journal and author.